

STATE OF FLORIDA  
 ENGINEER  
 No. 62725

February 21, 2018 4:14 PM K:\2017\130063.00\28 13-4164 Pine Ridge Subdivision Feasibility Study\001 Public Stormwater System Documentation\Current Plans\Exhibit\1300630028X SHEET INDEX.dwg

REV #	REVISION	DRAWN	CHECKED	DATE

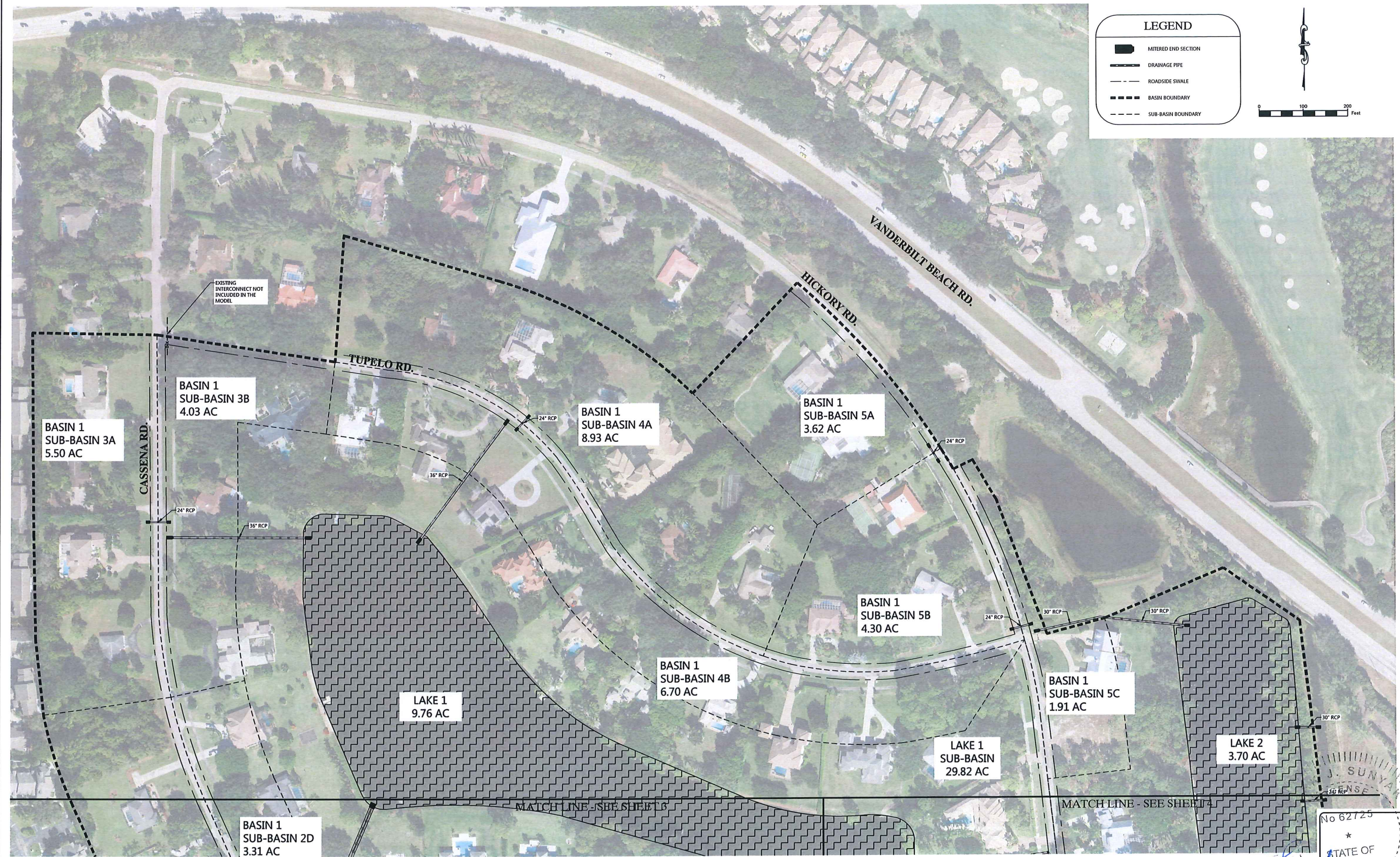
**RWA ENGINEERING**  
 6610 Willow Park Drive, Suite 200  
 Naples, Florida 34109  
 (239) 597-0575 FAX: (239) 597-0578  
 www.consult-rwa.com  
 Florida Certificates of Authorization  
 EB 7663 LB 6952

DATE: APRIL 2017	DESIGNED: MJS
SEC. PLY. REC. 11034 4849 25	DRAWN: OIL
HORIZ. SCALE (PLANS) 1" = 500'	VERT. SCALE (PLANS) N/A
HORIZ. SCALE (PROF) 1" = 1000'	VERT. SCALE (PROF) N/A

CLIENT: COLLIER COUNTY STORMWATER MANAGEMENT SECTION
TITLE: SHEET INDEX

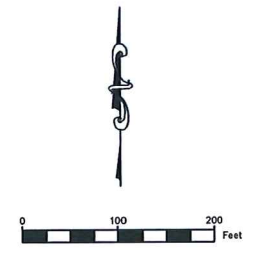
PROJECT: PINE RIDGE SUBDIVISION STORMWATER FEASIBILITY STUDY		
PROJECT NO: 130063.00.28	FILE NAME: 1300630028X SHEET INDEX	SHEET NUMBER: 1 OF 13

STATE OF FLORIDA  
 ENGINEER  
 No. 62725  
 MARK J. SURYAK, P.E.  
 FLORIDA LICENSE NO. 62725



**LEGEND**

- MITERED END SECTION
- DRAINAGE PIPE
- ROADSIDE SWALE
- BASIN BOUNDARY
- SUB-BASIN BOUNDARY



REV #	REVISION	DRAWN	CHECKED	DATE

**RWA ENGINEERING**

6610 Willow Park Drive, Suite 200  
 Naples, Florida 34109  
 (239) 597-0575 FAX: (239) 597-0578  
 www.consult-rwa.com  
 Florida Certificates of Authorization  
 EB 7663 LB 6952

DATE: APRIL 2017	DESIGNED: MIS
SEC. TWP. RGE: 11034 48.49 25	DRAWN: OL
HORIZ. SCALE (PLAT): 1" = 100'	VERT. SCALE (PLAT): N/A
HORIZ. SCALE (HAFF): 1" = 200'	VERT. SCALE (HAFF): N/A

CLIENT: COLLIER COUNTY  
 STORMWATER MANAGEMENT SECTION

TITLE: PROPOSED CONDITIONS SHEET 2

PROJECT: PINE RIDGE SUBDIVISION  
 STORMWATER FEASIBILITY STUDY

PROJECT NO.: 130063.00.28 FILE NAME: 130063.00.28 SHEET NUMBER: 2 of 13

No 62725


STATE OF FLORIDA

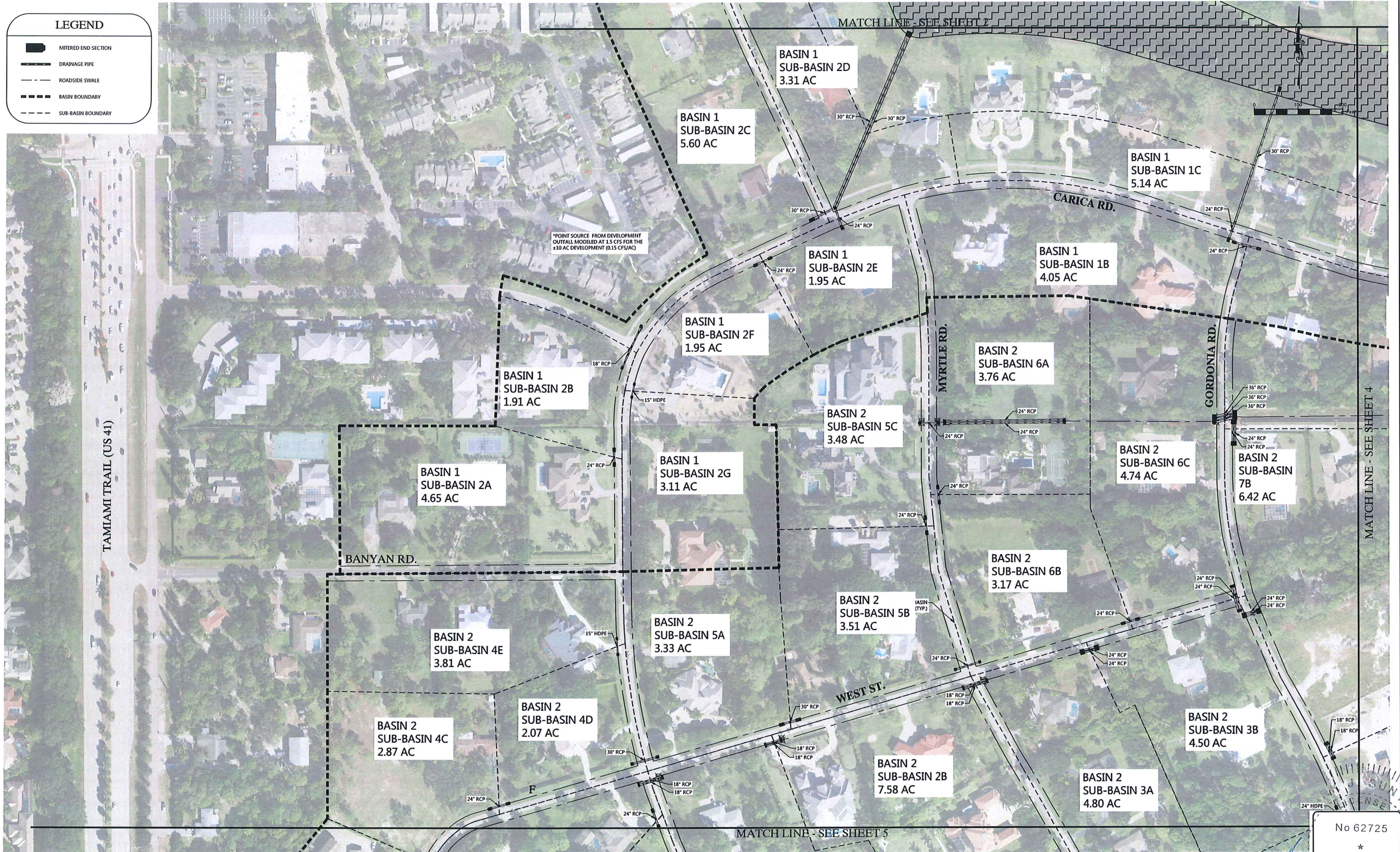
PROFESSIONAL ENGINEER

MARK J. SUNYAK, P.E.  
 FLORIDA LICENSE NO. 62725

2-21-18

**LEGEND**

-  MITERED END SECTION
-  DRAINAGE PIPE
-  ROADSIDE SWALE
-  BASIN BOUNDARY
-  SUB-BASIN BOUNDARY



February 21, 2018 5:19 PM K:\2018\130063\00\_28\_13-4164 Pine Ridge Subdivision Feasibility Study\001 Public Stormwater System Documentation\Current Plans\130063\0028X DETAILED EXHIBIT\_PROPOSED.dwg

REV #	REVISION	DRAWN	CHECKED	DATE



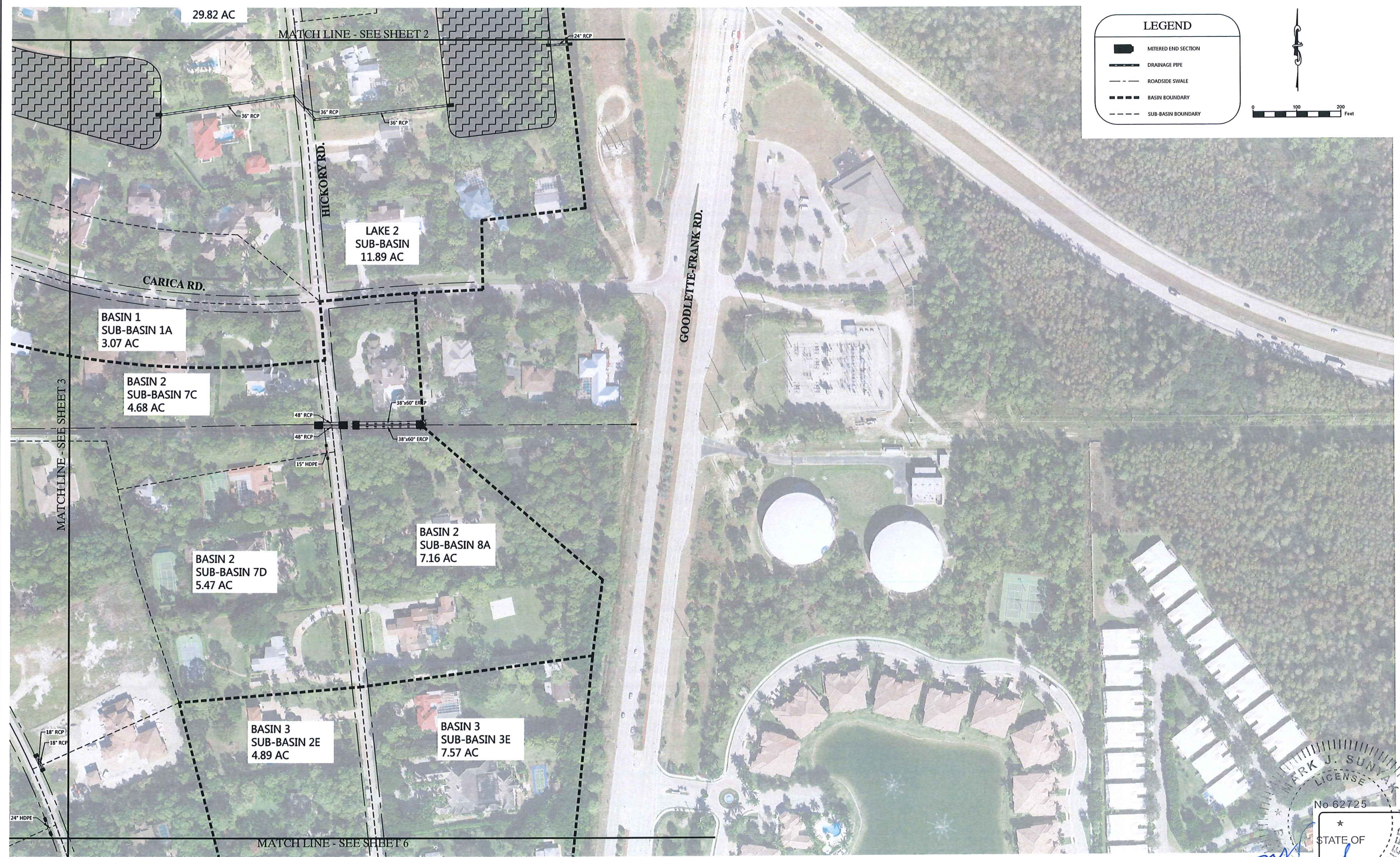
6610 Willow Park Drive, Suite 200  
Naples, Florida 34109  
(239) 597-0575 FAX: (239) 597-0578  
www.consult-rwa.com  
Florida Certificates of Authorization  
EB 7663 LB 6952

DATE: APRIL, 2017	DESIGNED: MJS
SIC: TWP: RGE: 13034 48.49 25	DRAWN: OL
HORIZ. SCALE (FULL): 1" = 100'	VERT. SCALE (FULL): N/A
HORIZ. SCALE (HALF): 1" = 200'	VERT. SCALE (HALF): N/A

CLIENT:	COLLIER COUNTY STORMWATER MANAGEMENT SECTION
TITLE:	PROPOSED CONDITIONS SHEET 3

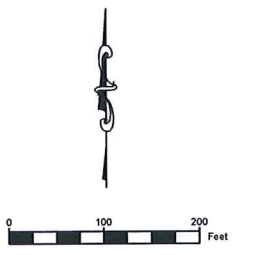
PROJECT:	PINE RIDGE SUBDIVISION STORMWATER FEASIBILITY STUDY	
PROJECT NO:	FILE NAME:	SHEET NUMBER:
130063.00.28	130063.00.28	3 OF 13

No 62725  
\*  
STATE OF  
FLORIDA  
REGISTERED PROFESSIONAL ENGINEER  
MARK A. SURYAK, P.E.  
FLORIDA LICENSE NO. 62725  
2/21/18



**LEGEND**

- MITERED END SECTION
- DRAINAGE PIPE
- ROADSIDE SWALE
- BASIN BOUNDARY
- SUB-BASIN BOUNDARY



February 21, 2018 5:19 PM K:\2018\130063.00.28 11-4164 Pine Ridge Subdivision Feasibility Study\001 Public Stormwater System Documentation\Current Plans\Exhibits\130063.00.DETAILED EXHIBIT\_PROPOSED.dwg

REV #	REVISION	DRAWN	CHECKED	DATE

**RWA ENGINEERING**

6610 Willow Park Drive, Suite 200  
 Naples, Florida 34109  
 (239) 597-0575 FAX: (239) 597-0578  
 www.consult-rwa.com  
 Florida Certificates of Authorization  
 EB 7663 LB 6952

DATE: APRIL 2017	DESIGNED: MIS
SEC: TWP: PGE: 11034 48,49 25	DRAWN: OIL
HORIZ SCALE (PLA): 1" = 100'	VERT SCALE (PLA): N/A
HORIZ SCALE (SHA): 1" = 200'	VERT SCALE (SHA): N/A

CLIENT: COLLIER COUNTY  
 STORMWATER MANAGEMENT SECTION

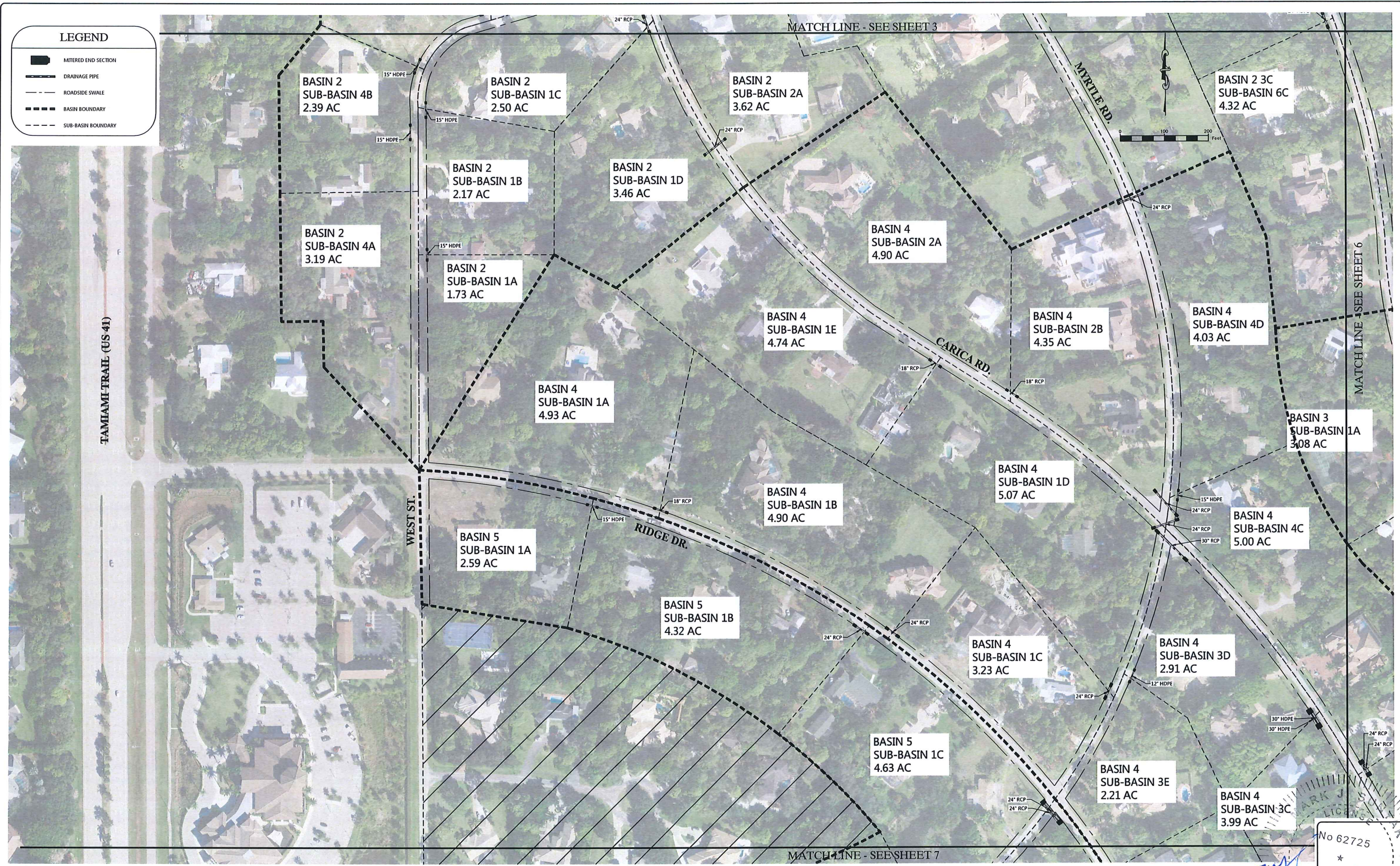
TITLE: PROPOSED CONDITIONS SHEET 4

PROJECT: PINE RIDGE SUBDIVISION  
 STORMWATER FEASIBILITY STUDY

PROJECT NO: 130063.00.28	FILE NAME: 130063.00.28	SHEET NUMBER: 4 OF 13
--------------------------	-------------------------	-----------------------

MARK J. SUNYAK  
 LICENSE No 62725  
 STATE OF FLORIDA  
 PROFESSIONAL ENGINEER

2/24/18



February 21, 2018 5:19 PM K:\2018\130063.00\28 13-4164 Pine Ridge Subdivision Feasibility Study\001 Public Stormwater System Documentation\Current Plans\Exhibits\130063\0028X DETAILED EXHIBIT\_PROPOSED.dwg

REV #	REVISION	DRAWN	CHECKED	DATE

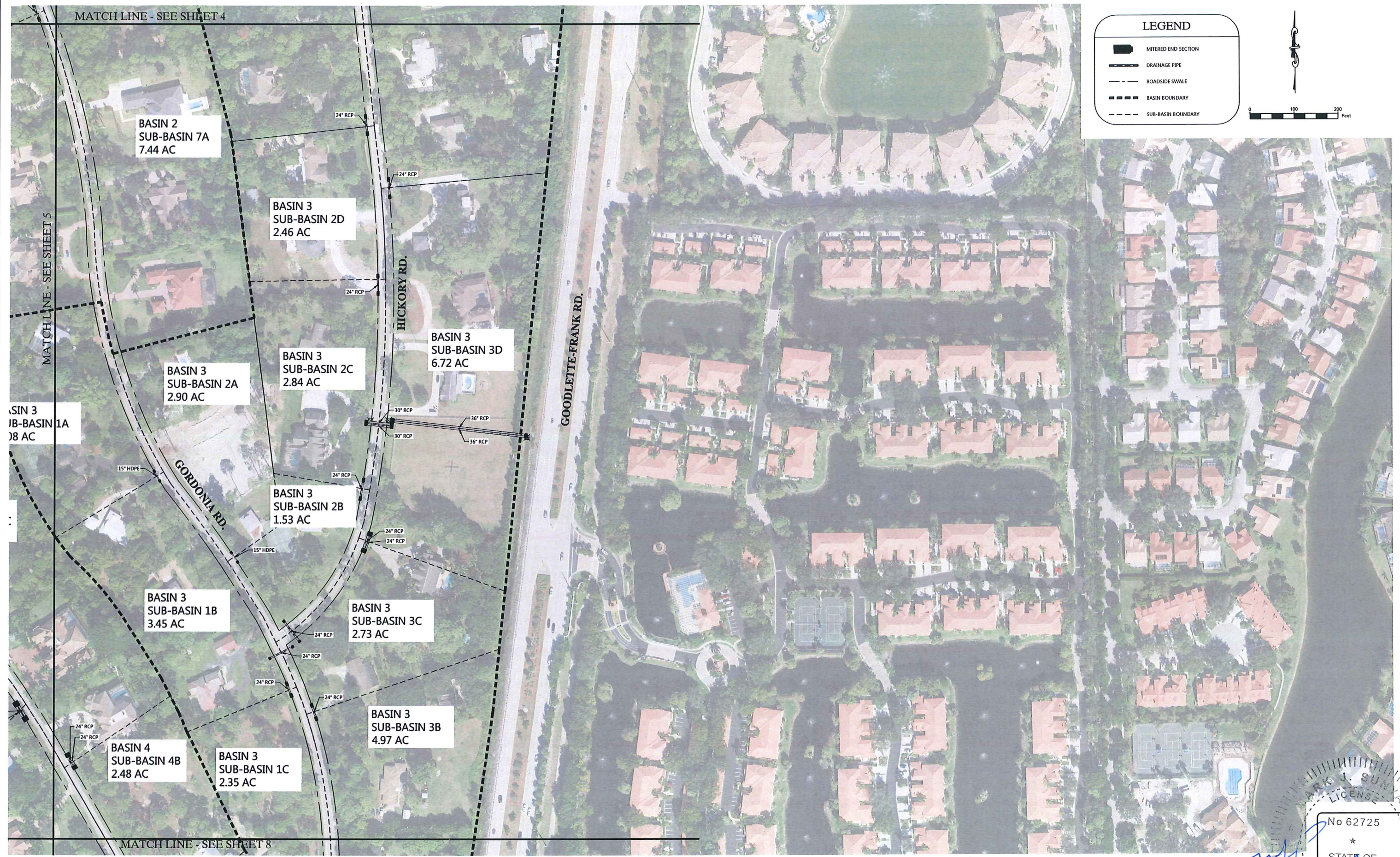
**RWA ENGINEERING**  
 6610 Willow Park Drive, Suite 200  
 Naples, Florida 34109  
 (239) 597-0575 FAX: (239) 597-0578  
 www.consult-rwa.com  
 Florida Certificates of Authorization  
 EB 7663 LB 6952

DATE: APRIL, 2017	DESIGNED: MJS
SEC: TWP: RGE: 13034 48.49 25	DRAWN: OL
HORIZ. SCALE (FULL): 1" = 100'	VERT. SCALE (FULL): N/A
HORIZ. SCALE (HALF): 1" = 200'	VERT. SCALE (HALF): N/A

CLIENT: COLLIER COUNTY  
 STORMWATER MANAGEMENT SECTION  
 TITLE: PROPOSED CONDITIONS SHEET 5

PROJECT: PINE RIDGE SUBDIVISION STORMWATER FEASIBILITY STUDY	PROJECT NO: 130063.00.28	FILE NAME: 130063.00.28	SHEET NUMBER: 5 of 13
---	--------------------------	-------------------------	-----------------------

No 62725  
 STATE OF FLORIDA  
 MARK SUBWAK, P.E.  
 FLORIDA LICENSE NO. 62725



**LEGEND**

- MITERED END SECTION
- DRAINAGE PIPE
- ROADSIDE SWALE
- BASIN BOUNDARY
- SUB-BASIN BOUNDARY

February 21, 2018 5:19 PM K:\2018\130063\00.28\13-6164 Pine Ridge Subdivision Feasibility Study\001 Public Stormwater System Documentation\Current Plans\130063\0028X DETAILED EXHIBIT PROPOSED.dwg

REV #	REVISION	DRAWN	CHECKED	DATE

**RWA ENGINEERING**

6610 Willow Park Drive, Suite 200  
 Naples, Florida 34109  
 (239) 597-0575 FAX: (239) 597-0578  
 www.consult-rwa.com  
 Florida Certificates of Authorization  
 EB 7663 LB 6952

DATE: APRIL 2017	DESIGNED: MJS
SIC: TWP: RGE: 110.34 48.49 25	DRAWN: OL
HORIZ. SCALE (FULL): 1" = 100'	VERT. SCALE (FULL): N/A
HORIZ. SCALE (HALF): 1" = 200'	VERT. SCALE (HALF): N/A

CLIENT: COLLIER COUNTY  
 STORMWATER MANAGEMENT SECTION

TITLE: PROPOSED CONDITIONS SHEET 6

PROJECT: PINE RIDGE SUBDIVISION  
 STORMWATER FEASIBILITY STUDY

PROJECT NO: 130063.00.28	FILE NAME: 130063.00.28	SHEET NUMBER: 6 OF 13
--------------------------	-------------------------	-----------------------

Professional Engineer Seal: MARK J. SURYAK, P.E., LICENSE No 62725, STATE OF FLORIDA

2/21/18





REV #	REVISION	DRAWN	CHECKED	DATE

**RWA ENGINEERING**

6610 Willow Park Drive, Suite 200  
 Naples, Florida 34109  
 (239) 597-0575 FAX: (239) 597-0578  
 www.consult-rwa.com  
 Florida Certificates of Authorization  
 EB 7663 LB 6952

DATE: APRIL 2017	DESIGNED: MUS
SEC. TWP. RGE: 18N 24E 25	DRAWN: OL
HORIZ. SCALE (PLANS): 1" = 100'	VERT. SCALE (PROF.): N/A
HORIZ. SCALE (ELEV.): 1" = 200'	VERT. SCALE (ELEV.): N/A

CLIENT: COLLIER COUNTY  
 STORMWATER MANAGEMENT SECTION

TITLE: PROPOSED CONDITIONS SHEET 8

PROJECT: PINE RIDGE SUBDIVISION  
 STORMWATER FEASIBILITY STUDY



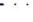
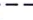
PROJECT NO: 130063.00.28 FILE NAME: 130063.00.28 SHEET NUMBER: 8 of 13

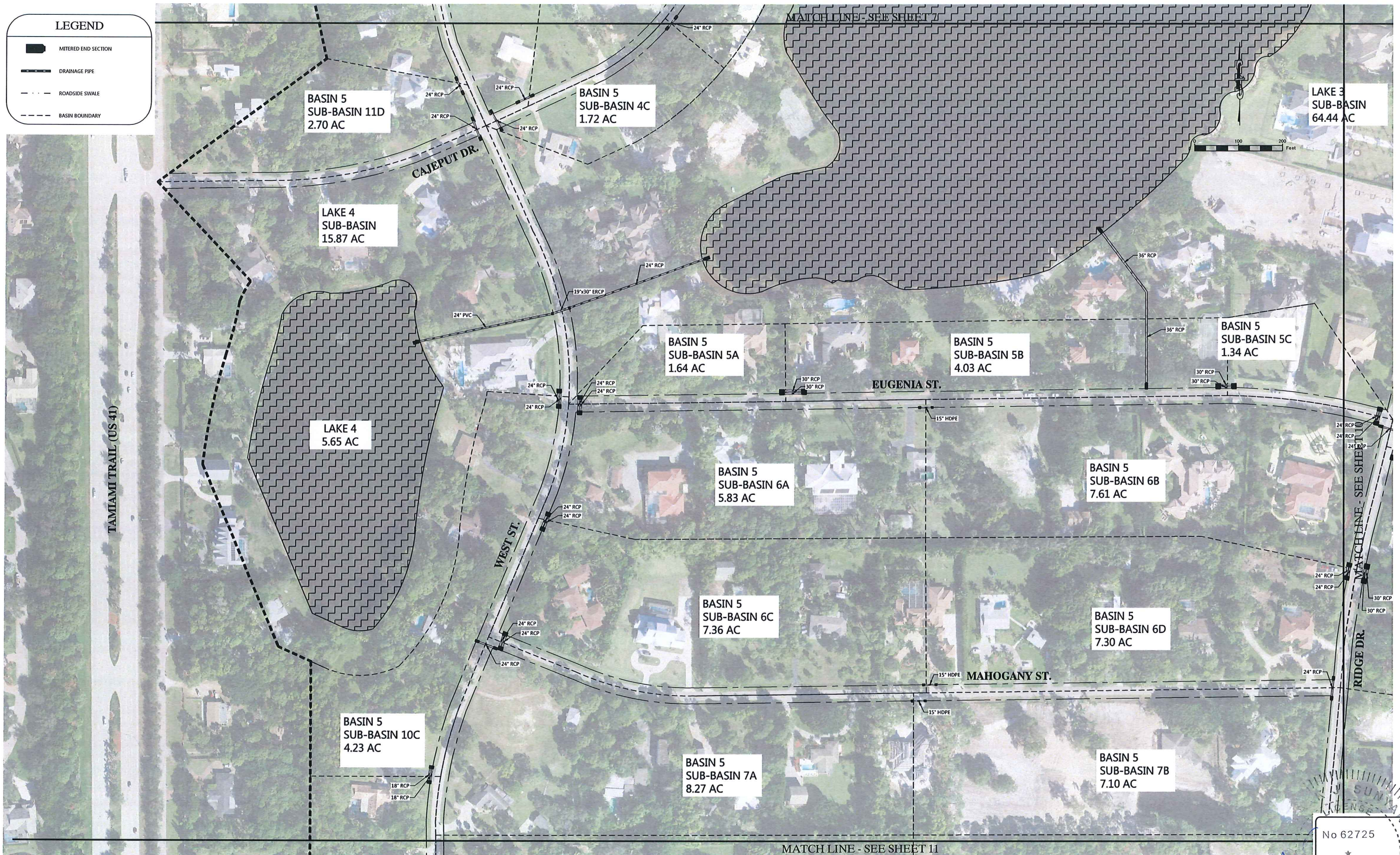
Professional Engineer Seal for Mark J. Sunyak, P.E., License No. 62725, State of Florida.

2/21/18



**LEGEND**

-  MITERED END SECTION
-  DRAINAGE PIPE
-  ROADSIDE SWALE
-  BASIN BOUNDARY



February 21, 2018 5:19 PM K:\2018\130063\02.28 13-4164 Pine Ridge Subdivision Feasibility Study\001 Public Stormwater System Documentation\Current Plans\Exhibits\130063\002\28 DETAILED EXHIBIT\_PROPOSED.dwg

REV #	REVISION	DRAWN	CHECKED	DATE

**RWA ENGINEERING**

6610 Willow Park Drive, Suite 200  
 Naples, Florida 34109  
 (239) 597-0575 FAX: (239) 597-0578  
 www.consult-rwa.com  
 Florida Certificates of Authorization  
 EB 7663 LB 6952

DATE: APRIL, 2017	DESIGNED: MJS
SEC: 31034	TWP: 48.49
RGE: 25	DRAWN: OIL
HORIZ. SCALE (FULL): 1" = 100'	VERT. SCALE (FULL): N/A
HORIZ. SCALE (HALF): 1" = 200'	VERT. SCALE (HALF): N/A

CLIENT: COLLIER COUNTY  
 STORMWATER MANAGEMENT SECTION

TITLE: PROPOSED CONDITIONS SHEET 9

PROJECT: PINE RIDGE SUBDIVISION  
 STORMWATER FEASIBILITY STUDY

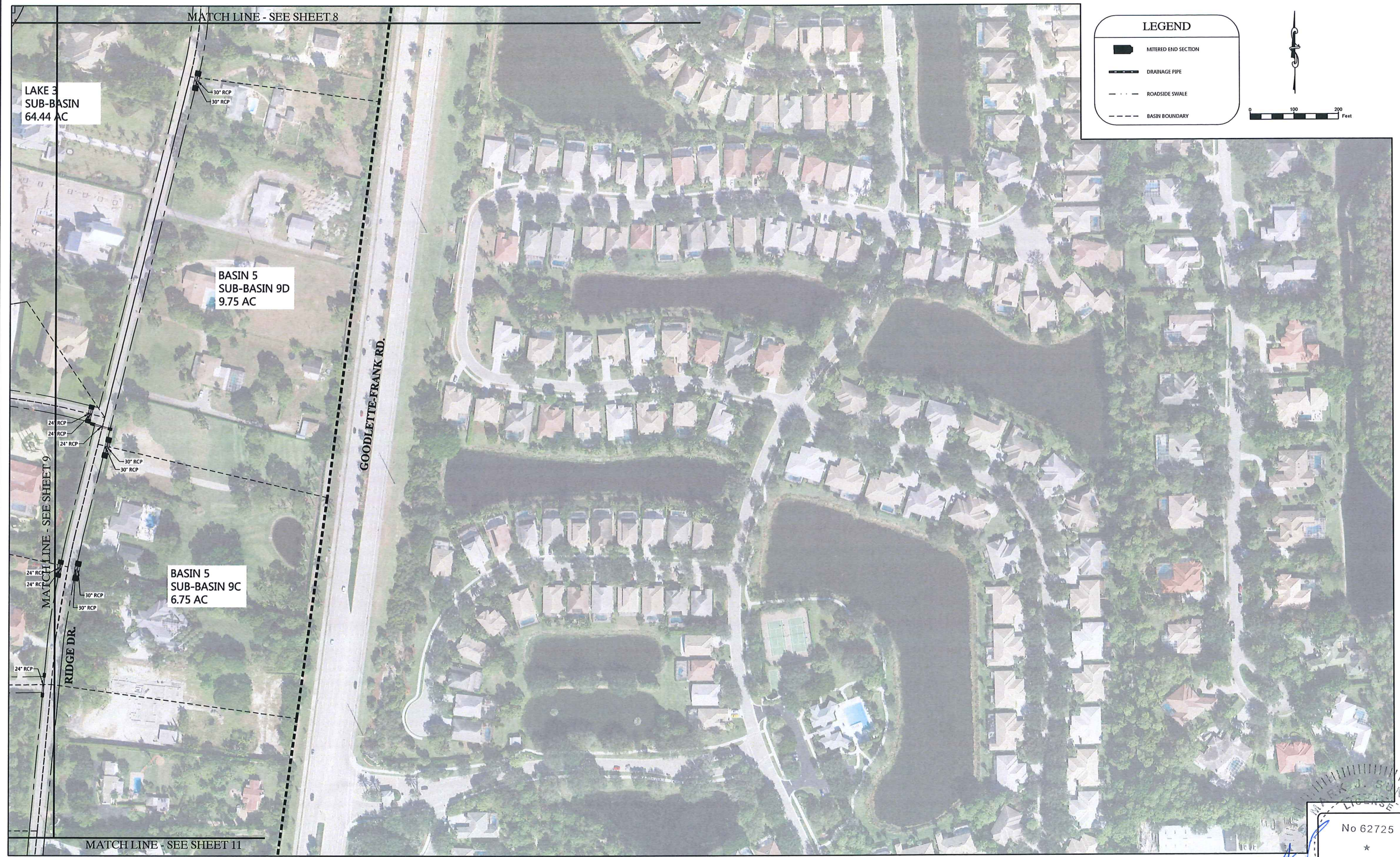
PROJECT NO.: 130063.00.28 FILE NAME: 130063.00.28 SHEET NUMBER: 9 OF 13

No 62725

STATE OF FLORIDA

MARKA SUNYAR P.E.  
 FLORIDA LICENSE NO. 62725

2/21/18



**LEGEND**

- MITERED END SECTION
- DRAINAGE PIPE
- ROADSIDE SWALE
- BASIN BOUNDARY

REV #	REVISION	DRAWN	CHECKED	DATE

**RWA ENGINEERING**

6610 Willow Park Drive, Suite 200  
 Naples, Florida 34109  
 (239) 597-0575 FAX: (239) 597-0578  
 www.consult-rwa.com  
 Florida Certificates of Authorization  
 EB 7663 LB 6952

DATE: APRIL 2017	DESIGNED: MIS
SEC. TWP. RGE: 110.34 48.49 25	DRAWN: OL
HORIZ. SCALE (FULL): 1" = 100'	VERT. SCALE (FULL): N/A
HORIZ. SCALE (HALF): 1" = 200'	VERT. SCALE (HALF): N/A

CLIENT: COLLIER COUNTY STORMWATER MANAGEMENT SECTION

TITLE: PROPOSED CONDITIONS SHEET 10

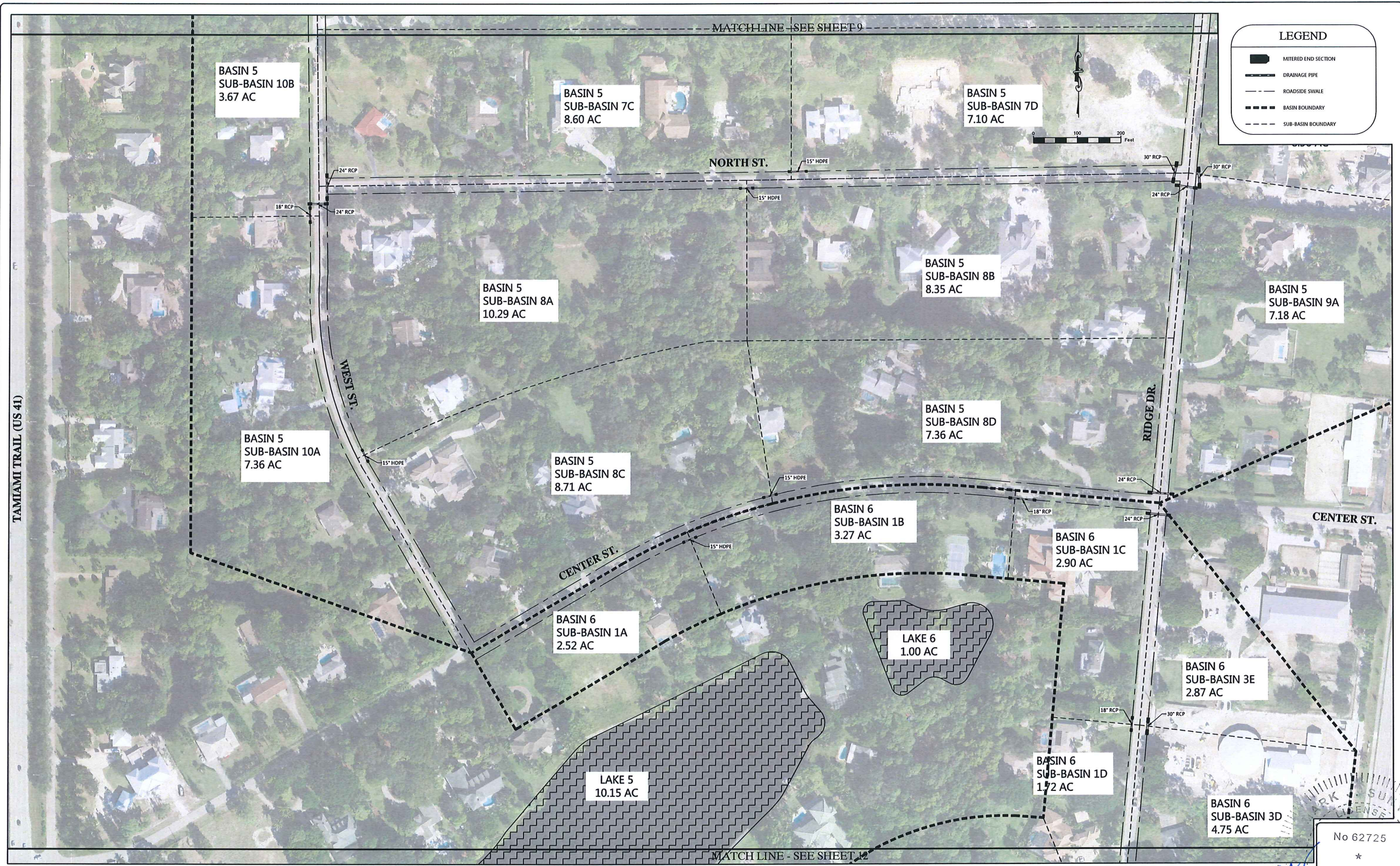
PROJECT: PINE RIDGE SUBDIVISION STORMWATER FEASIBILITY STUDY

PROJECT NO: 130063.00.28 FILE NAME: 130063.00.28 SHEET NUMBER: 10 of 13

Professional Engineer Seal for Mark J. Sulevsk, P.E., License No. 62725, State of Florida.

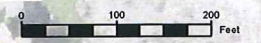
Handwritten signature and date: 2/24/18

February 21, 2018 5:19 PM K:\2018\130063\00.28\13-4164 Pine Ridge Subdivision Feasibility Study\001 Public Stormwater System Documentation\Current Plans\A\01\130063\0028X DETAILED EHEMT\_PROPOSED.dwg



**LEGEND**

- MITERED END SECTION
- DRAINAGE PIPE
- ROADSIDE SWALE
- BASIN BOUNDARY
- SUB-BASIN BOUNDARY



REV #	REVISION	DRAWN	CHECKED	DATE

**RWA ENGINEERING**

6610 Willow Park Drive, Suite 200  
 Naples, Florida 34109  
 (239) 597-0575 FAX: (239) 597-0578  
 www.consult-rwa.com  
 Florida Certificates of Authorization  
 EB 7663 LB 6952

DATE: APRIL, 2017	DESIGNED: MJS
SEC: TWP: RGE: 310.34 48.49 25	DRAWN: OL
HORIZ. SCALE (FULL): 1" = 100'	VERT. SCALE (FULL): N/A
HORIZ. SCALE (HALF): 1" = 200'	VERT. SCALE (HALF): N/A

CLIENT: COLLIER COUNTY  
 STORMWATER MANAGEMENT SECTION

TITLE: PROPOSED CONDITIONS SHEET 11

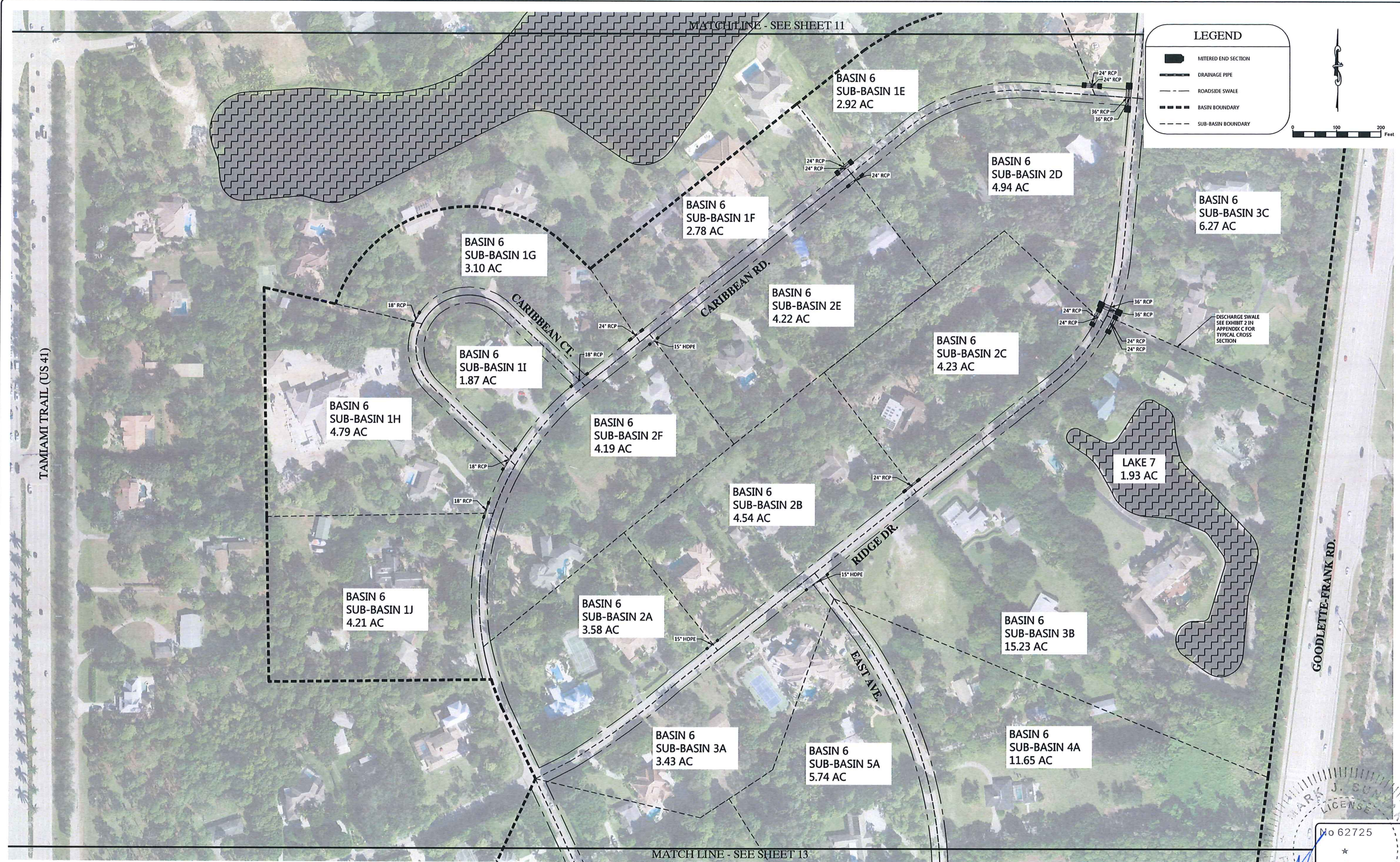
PROJECT: PINE RIDGE SUBDIVISION  
 STORMWATER FEASIBILITY STUDY

PROJECT NO: 130063.00.28 FILE NAME: 130063.00.28 SHEET NUMBER: 11 OF 13

No 62725  
 \*  
 STATE OF  
 FLORIDA

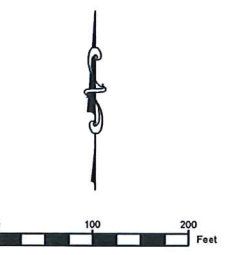
MARK J. SUYAK, P.E.  
 FLORIDA LICENSE NO. 62725

2-2-18



**LEGEND**

- MITERED END SECTION
- DRAINAGE PIPE
- ROADSIDE SWALE
- BASIN BOUNDARY
- SUB-BASIN BOUNDARY



February 21, 2018 3:19 PM K:\01\130063\00\_28\13-4164 Pine Ridge Subdivision Feasibility Study\01 Public Stormwater System Documentation\Current Plans\Exhibits\EXHIBIT 2 DETAILED EXHIBIT\_PROPOSED.dwg

REV #	REVISION	DRAWN	CHECKED	DATE

**RWA ENGINEERING**

6610 Willow Park Drive, Suite 200  
Naples, Florida 34109  
(239) 597-0575 FAX: (239) 597-0578  
www.consult-rwa.com  
Florida Certificates of Authorization  
EB 7663 LB 6952

DATE: APRIL, 2017	DESIGNED: MJS		
SEC: 13034	TWP: 48.49	RGE: 25	DRAWN: OJL
HORIZ SCALE (FULL): 1" = 100'	VERT SCALE (FULL): N/A		
HORIZ SCALE (HALF): 1" = 200'	VERT SCALE (HALF): N/A		

CLIENT: COLLIER COUNTY  
STORMWATER MANAGEMENT SECTION

TITLE: PROPOSED CONDITIONS SHEET 12

PROJECT: PINE RIDGE SUBDIVISION  
STORMWATER FEASIBILITY STUDY






PROJECT NO.: 130063.00.28 FILE NAME: 130063.00.28 SHEET NUMBER: 12 OF 13



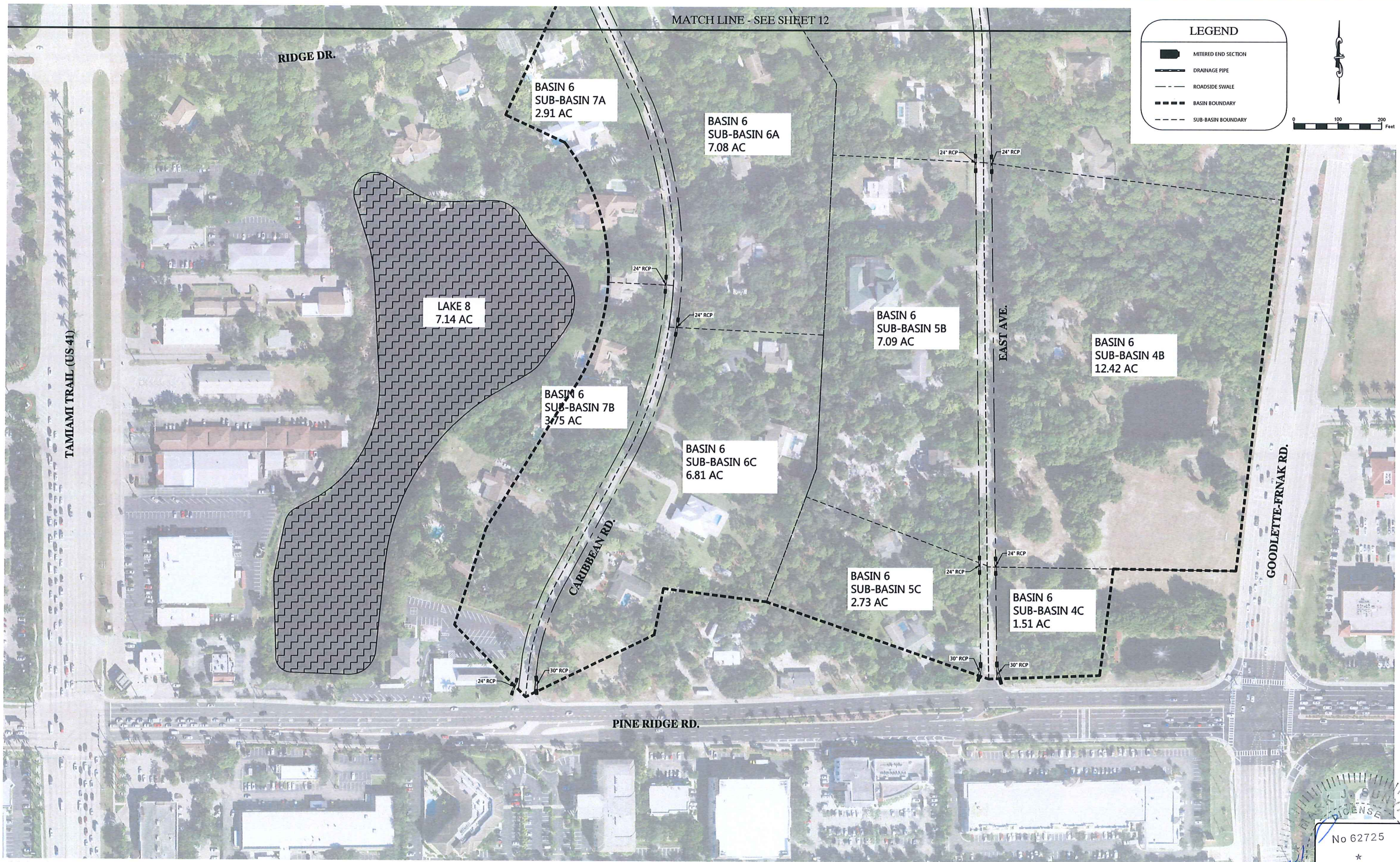
MARK J. SUNYAK  
LICENSE  
No 62725  
STATE OF FLORIDA  
REGISTERED PROFESSIONAL ENGINEER  
FLORIDA LICENSE NO. 62725

2/21/18

MATCH LINE - SEE SHEET 12

**LEGEND**

-  MITERED END SECTION
-  DRAINAGE PIPE
-  ROADSIDE SWALE
-  BASIN BOUNDARY
-  SUB-BASIN BOUNDARY

February 21, 2018 9:19 PM K:\01513063\0028\33-4164 Pine Ridge Subdivision Feasibility Study\01 Public Stormwater System Documentation\Current Plans\130063\0028X DETAILED EXHIBIT\_PROPOSED.dwg

REV #	REVISION	DRAWN	CHECKED	DATE

**RWA ENGINEERING**

6610 Willow Park Drive, Suite 200  
 Naples, Florida 34109  
 (239) 597-0575 FAX: (239) 597-0578  
 www.consult-rwa.com  
 Florida Certificates of Authorization  
 EB 7663 LB 6952

DATE: APRIL, 2017	DESIGNED: MJS
SEC. TWP. RGE: 31R34 48.49 2S	DRAWN: DL
HORIZ. SCALE (P&L): 1" = 100'	VERT. SCALE (P&L): N/A
HORIZ. SCALE (DWG): 1" = 200'	VERT. SCALE (DWG): N/A

CLIENT: COLLIER COUNTY  
 STORMWATER MANAGEMENT SECTION

TITLE: PROPOSED CONDITIONS SHEET 13

PROJECT: PINE RIDGE SUBDIVISION  
 STORMWATER FEASIBILITY STUDY

PROJECT NO.: 130063.00.28 FILE NAME: 130063.00.28 SHEET NUMBER: 13 OF 13

Professional Engineer Seal for Mark J. Sunyak, P.E., License No. 62725, State of Florida.

2/21/18