

February 21, 2018 4:14 PM K:\01\130063.00.28 13-4564 Pine Ridge Subdivision Feasibility Study\001 Public Stormwater System Documentation\Current Plans\Exhibits\1300630028X SHEET INDEX.dwg

REV #	REVISION	DRAWN	CHECKED	DATE

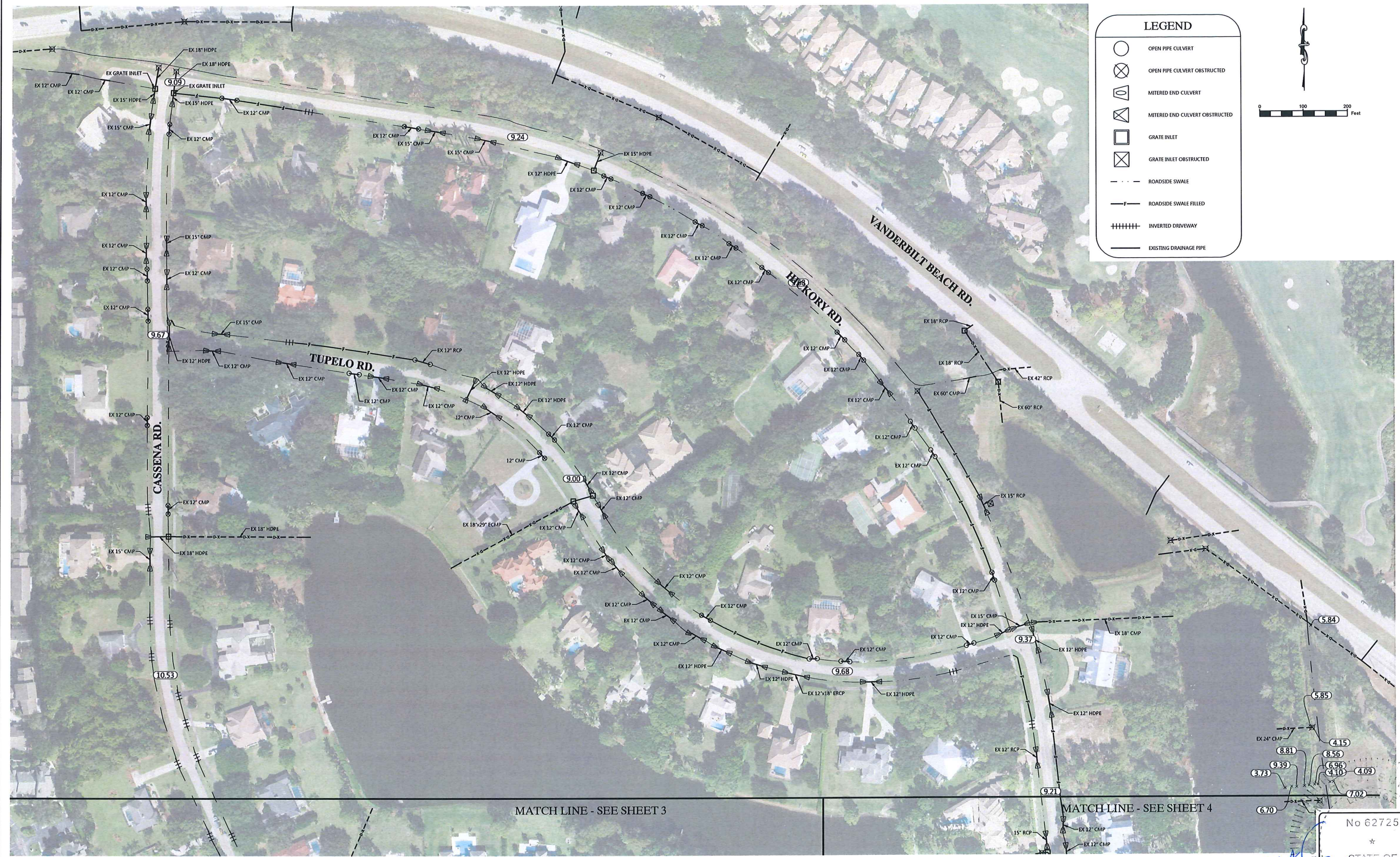
RWA ENGINEERING
 6610 Willow Park Drive, Suite 200
 Naples, Florida 34109
 (239) 597-0575 FAX: (239) 597-0578
 www.consult-rwa.com
 Florida Certificates of Authorization
 EB 7663 LB 6952

DATE: APRIL, 2017	DESIGNED: MIS
DRAWN: OL	CHECKED: OL
HORIZ. SCALE (PLAN): 1" = 500'	VERT. SCALE (ELEV.): N/A
HORIZ. SCALE (SHAFT): 1" = 1000'	VERT. SCALE (SHAFT): N/A

CLIENT:	COLLIER COUNTY STORMWATER MANAGEMENT SECTION
TITLE:	SHEET INDEX

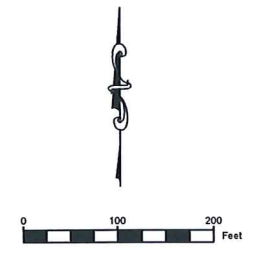
PROJECT:	PINE RIDGE SUBDIVISION STORMWATER FEASIBILITY STUDY	
PROJECT NO.:	FILE NAME:	SHEET NUMBER:
130063.00.28	1300630028X SHEET INDEX	1 OF 13

No 62725
 STATE OF FLORIDA
 PROFESSIONAL ENGINEER
 MARK J. SUNYAK, P.E.
 FLORIDA LICENSE NO. 62725
 2/21/18



LEGEND

- OPEN PIPE CULVERT
- ⊗ OPEN PIPE CULVERT OBSTRUCTED
- ◐ MITERED END CULVERT
- ◑ MITERED END CULVERT OBSTRUCTED
- GRATE INLET
- ⊗ GRATE INLET OBSTRUCTED
- - - ROADSIDE SWALE
- ROADSIDE SWALE FILLED
- ||||| INVERTED DRIVEWAY
- EXISTING DRAINAGE PIPE



MATCH LINE - SEE SHEET 3

MATCHLINE - SEE SHEET 4

February 21, 2018 4:50 PM K:\2013\130063.00.28\13-4164 Pine Ridge Subdivision Feasibility Study\001 Public Stormwater System Documentation\Current Plans\Exhibits\130063.00\28X DETAILED EXISTING.DWG

REV #	REVISION	DRAWN	CHECKED	DATE

RWA ENGINEERING

6610 Willow Park Drive, Suite 200
 Naples, Florida 34109
 (239) 597-0575 FAX: (239) 597-0578
 www.consult-nwa.com
 Florida Certificates of Authorization
 EB 7663 LB 6952

DATE: APRIL 2017	DESIGNED: MJS
SEC: TWP: RGE: 11034 48,49 25	DRAWN: OIL
HORIZ. SCALE (PLA): 1" = 100'	VERT. SCALE (PLA): N/A
HORIZ. SCALE (SHA): 1" = 200'	VERT. SCALE (SHA): N/A

CLIENT: COLLIER COUNTY
 STORMWATER MANAGEMENT SECTION

TITLE: EXISTING CONDITIONS SHEET 2

PROJECT: PINE RIDGE SUBDIVISION
 STORMWATER FEASIBILITY STUDY

PROJECT NO: 130063.00.28 FILE NAME: 130063.00.28 SHEET NUMBER: 2 of 13






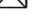




No 62725

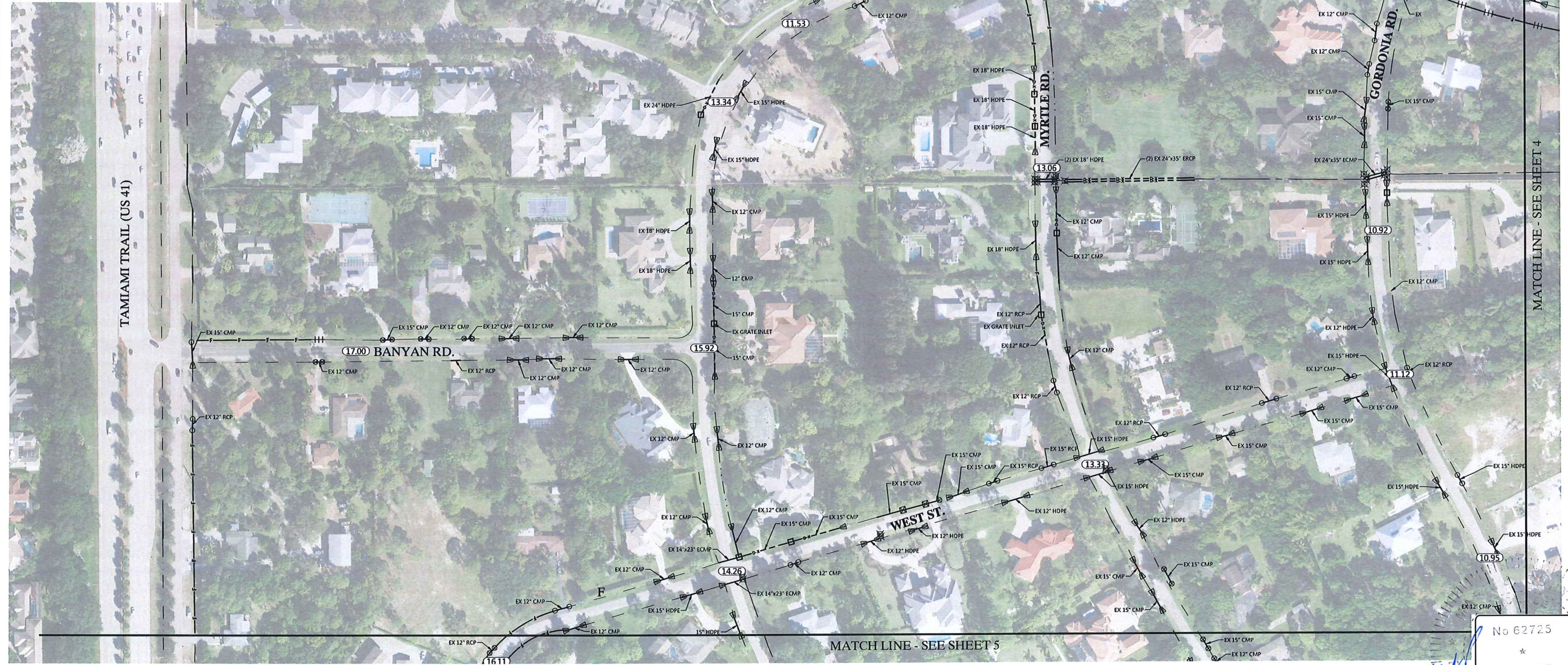
STATE OF FLORIDA

MARK J. SUNYAK, P.E.
 FLORIDA LICENSE NO. 62725

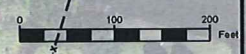
2/21/18

LEGEND

-  OPEN PIPE CULVERT
-  OPEN PIPE CULVERT OBSTRUCTED
-  MITERED END CULVERT
-  MITERED END CULVERT OBSTRUCTED
-  GRATE INLET
-  GRATE INLET OBSTRUCTED
-  ROADSIDE SWALE
-  ROADSIDE SWALE FILLED
-  INVERTED DRIVEWAY
-  EXISTING DRAINAGE PIPE



MATCH LINE - SEE SHEET 2



MATCH LINE - SEE SHEET 4

MATCH LINE - SEE SHEET 5

February 21, 2018 4:50 PM K:\01\130063\0028\13-4154 Pine Ridge Subdivision Feasibility Study\011 Public Stormwater System Documentation\Current Plans\Exhibits\1300630028\EX DETAIL\EXISTING.dwg

REV #	REVISION	DRAWN	CHECKED	DATE

RWA ENGINEERING

6610 Willow Park Drive, Suite 200
 Naples, Florida 34109
 (239) 597-0575 FAX: (239) 597-0578
 www.consult-rwa.com
 Florida Certificates of Authorization
 EB 7663 LB 6952

DATE: APRIL, 2017	DESIGNED: MJS
SIC: TWP: RGE: 11034 48.49 25	DRAWN: OL
HORIZ. SCALE (FULL): 1" = 100'	VERT. SCALE (FULL): N/A
HORIZ. SCALE (HALF): 1" = 200'	VERT. SCALE (HALF): N/A

CLIENT:	COLLIER COUNTY STORMWATER MANAGEMENT SECTION
TITLE:	EXISTING CONDITIONS SHEET 3

PROJECT:	PINE RIDGE SUBDIVISION STORMWATER FEASIBILITY STUDY		
PROJECT NO.:	130063.00.28	FILE NAME:	130063.00.28
SHEET NUMBER:	3	OF	13

No 62725

STATE OF FLORIDA

REGISTERED PROFESSIONAL ENGINEER

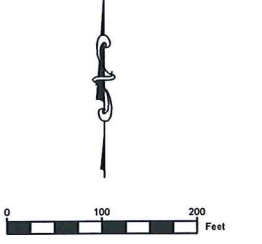
MARK J. SUNYAK, P.E.
 FLORIDA LICENSE NO. 62725

2/21/18



LEGEND

- OPEN PIPE CULVERT
- OPEN PIPE CULVERT OBSTRUCTED
- MITERED END CULVERT
- MITERED END CULVERT OBSTRUCTED
- GRATE INLET
- GRATE INLET OBSTRUCTED
- ROADSIDE SWALE
- ROADSIDE SWALE FILLED
- INVERTED DRIVEWAY
- EXISTING DRAINAGE PIPE



REV #	REVISION	DRAWN	CHECKED	DATE

RWA ENGINEERING

6610 Willow Park Drive, Suite 200
 Naples, Florida 34109
 (239) 597-0575 FAX: (239) 597-0578
 www.consult-rwa.com
 Florida Certificates of Authorization
 EB 7663 LB 6952

DATE: APRIL 2017	DESIGNED: MIS
SEC. TWP. RGE: 11034 4849 25	DRAWN: OL
HORIZ. SCALE (PLAT): 1" = 100'	VERT. SCALE (PLAT): N/A
HORIZ. SCALE (HAUF): 1" = 200'	VERT. SCALE (HAUF): N/A

CLIENT: COLLIER COUNTY STORMWATER MANAGEMENT SECTION

TITLE: EXISTING CONDITIONS SHEET 4

PROJECT: PINE RIDGE SUBDIVISION STORMWATER FEASIBILITY STUDY

PROJECT NO: 130063.00.28	FILE NAME: 130063.00.28	SHEET NUMBER: 4 of 13
--------------------------	-------------------------	-----------------------

Professional Engineer Seal for Mark J. Sunyak, License No. 62725, State of Florida.

2/24/18

LEGEND

- OPEN PIPE CULVERT
- OPEN PIPE CULVERT OBSTRUCTED
- MITERED END CULVERT
- MITERED END CULVERT OBSTRUCTED
- GRATE INLET
- GRATE INLET OBSTRUCTED
- ROADSIDE SWALE
- ROADSIDE SWALE FILLED
- INVERTED DRIVEWAY
- EXISTING DRAINAGE PIPE



February 21, 2018 4:50 PM K:\0131\130063.00.28 13-4164 Pine Ridge Subdivision Feasibility Study\013 Public Stormwater System Documentation\Current Plans\Exhibits\130063\02\EX DETAILED EXHIBIT_EXISTING.dwg

REV #	REVISION	DRAWN	CHECKED	DATE

RWA ENGINEERING

6610 Willow Park Drive, Suite 200
 Naples, Florida 34109
 (239) 597-0575 FAX: (239) 597-0578
 www.consult-rwa.com
 Florida Certificates of Authorization
 EB 7663 LB 6952

DATE: APRIL 2017	DESIGNED: MJS
SEC: TWP: RGE: 13034 48,49 25	DRAWN: OL
HORIZ. SCALE (PLANS): 1" = 100'	VERT. SCALE (PLANS): N/A
HORIZ. SCALE (HALF): 1" = 200'	VERT. SCALE (HALF): N/A

CLIENT: COLLIER COUNTY STORMWATER MANAGEMENT SECTION

TITLE: EXISTING CONDITIONS SHEET 5

PROJECT: PINE RIDGE SUBDIVISION STORMWATER FEASIBILITY STUDY

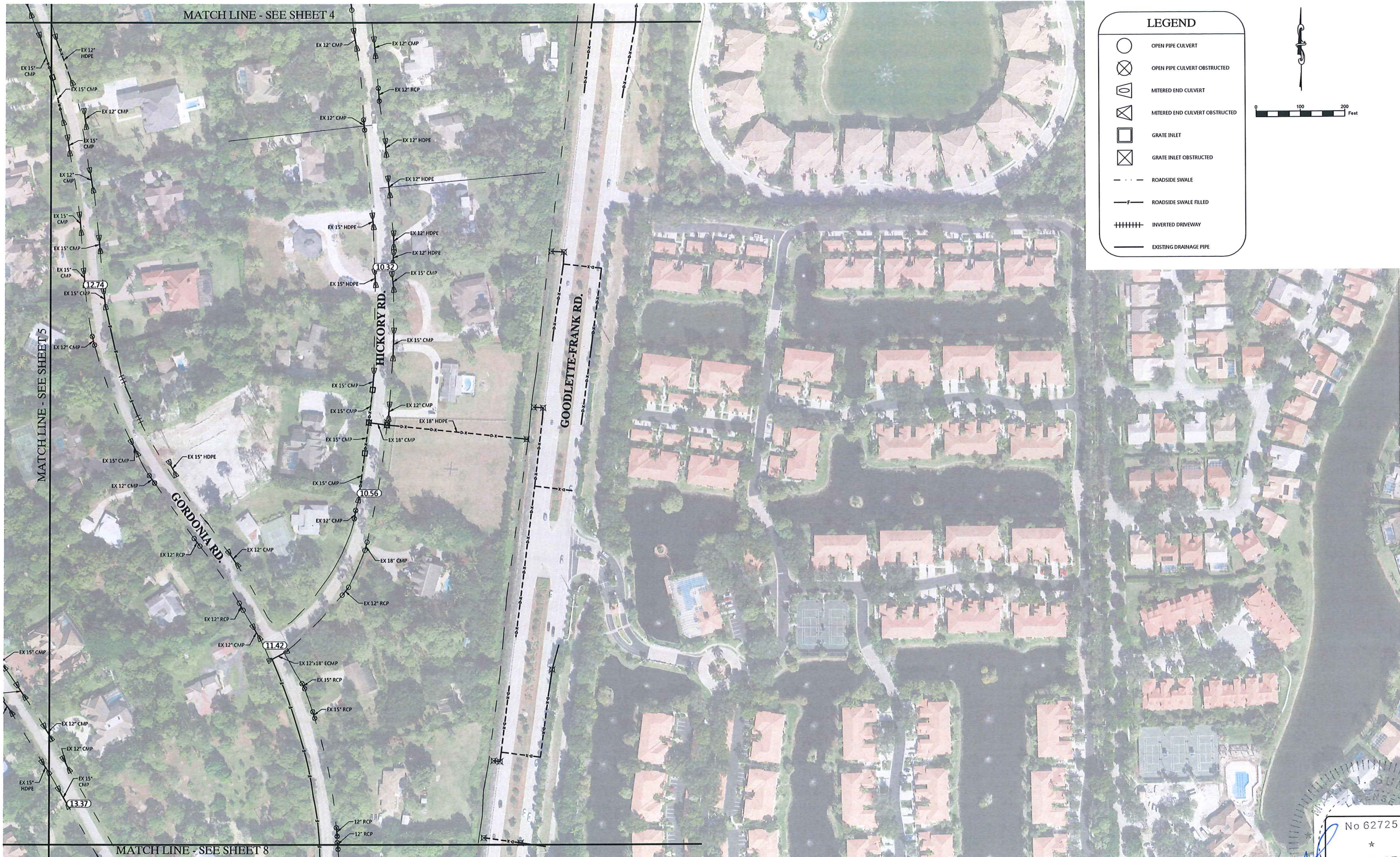
PROJECT NO: 130063.00.28 FILE NAME: 130063.00.28 SHEET NUMBER: 5 of 13

No 62725

STATE OF FLORIDA

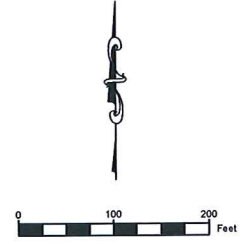
MARK J. SUYAK, P.E.
 FLORIDA LICENSE NO. 62725

2/21/18



LEGEND

- OPEN PIPE CULVERT
- OPEN PIPE CULVERT OBSTRUCTED
- MITERED END CULVERT
- MITERED END CULVERT OBSTRUCTED
- GRATE INLET
- GRATE INLET OBSTRUCTED
- ROADSIDE SWALE
- ROADSIDE SWALE FILLED
- INVERTED DRIVEWAY
- EXISTING DRAINAGE PIPE



February 21, 2018 4:50 PM K:\0171\130063\0028\13-0154 Pine Ridge Subdivision Feasibility Study\011 Public Stormwater System Documentation\Current Plans\130063\0028\0028 EXISTING.dwg

REV #	REVISION	DRAWN	CHECKED	DATE

RWA ENGINEERING

6610 Willow Park Drive, Suite 200
 Naples, Florida 34109
 (239) 597-0575 FAX: (239) 597-0578
 www.consult-rwa.com
 Florida Certificates of Authorization
 EB 7663 LB 6952

DATE: APRIL 2017	DESIGNED: MMS
SEC. TWP. RGE: 110.34 48.49 25	DRAWN: OL
HORIZ. SCALE (FULL): 1" = 100'	VERT. SCALE (FULL): N/A
HORIZ. SCALE (HALF): 1" = 200'	VERT. SCALE (HALF): N/A

CLIENT: COLLIER COUNTY
 STORMWATER MANAGEMENT SECTION

TITLE: EXISTING CONDITIONS SHEET 6

PROJECT: PINE RIDGE SUBDIVISION
 STORMWATER FEASIBILITY STUDY

PROJECT NO: 130063.00.28	FILE NAME: 130063.00.28	SHEET NUMBER: 6 of 13
--------------------------	-------------------------	-----------------------

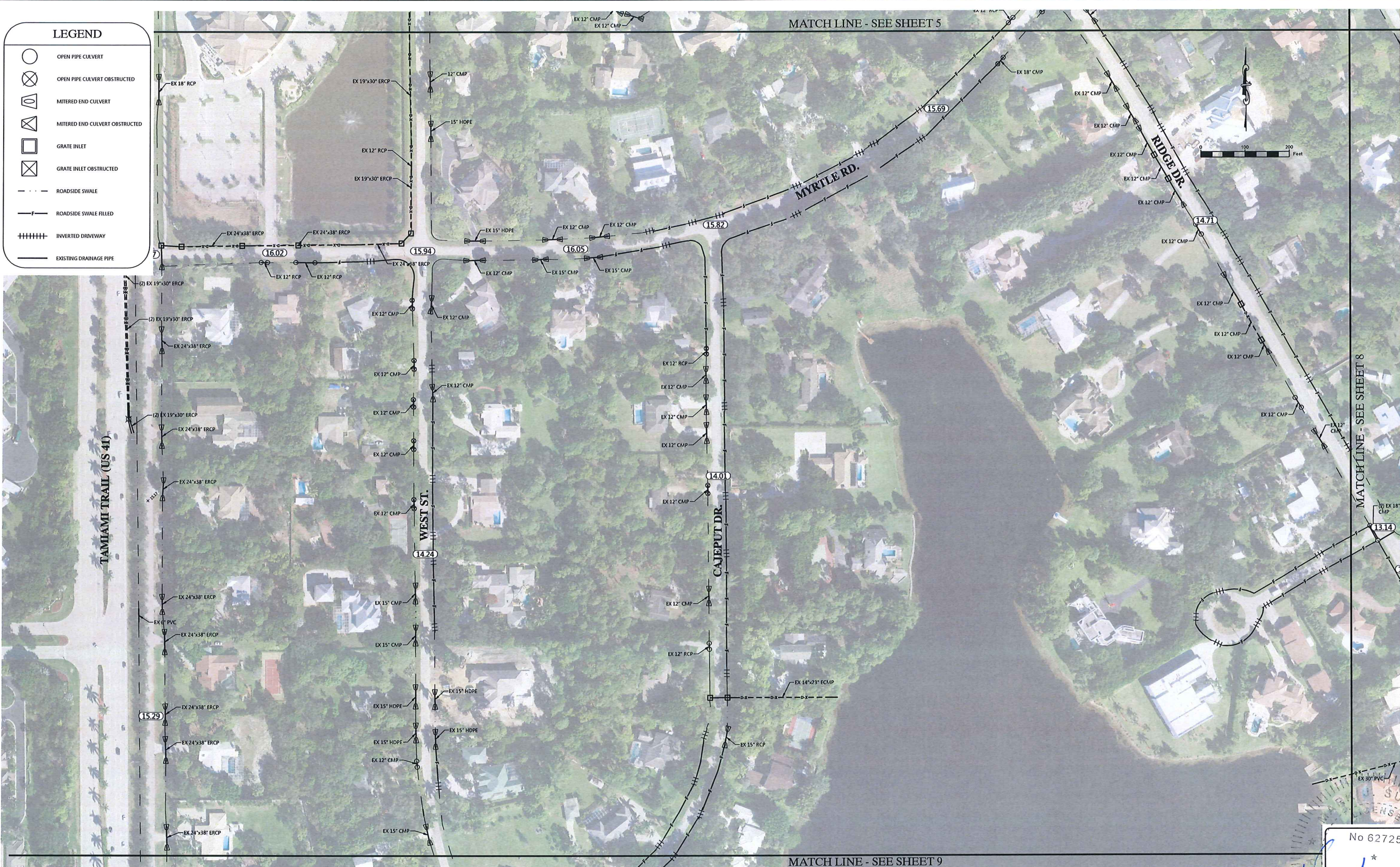
No 62725
 *
 STATE OF FLORIDA
 PROFESSIONAL ENGINEER

MARK J. SUNYAK, P.E.
 FLORIDA LICENSE NO. 62725

2-21-18

LEGEND

- OPEN PIPE CULVERT
- OPEN PIPE CULVERT OBSTRUCTED
- MITERED END CULVERT
- MITERED END CULVERT OBSTRUCTED
- GRATE INLET
- GRATE INLET OBSTRUCTED
- ROADSIDE SWALE
- ROADSIDE SWALE FILLED
- INVERTED DRIVEWAY
- EXISTING DRAINAGE PIPE



REV #	REVISION	DRAWN	CHECKED	DATE

RWA ENGINEERING

6610 Willow Park Drive, Suite 200
 Naples, Florida 34109
 (239) 597-0575 FAX: (239) 597-0578
 www.consult-rwa.com
 Florida Certificates of Authorization
 EB 7663 LB 6952

DATE: APRIL 2017	DESIGNED: MIS
SEC. TWP. RGE: 11034 48,49 25	DRAWN: OL
HORIZ. SCALE (FULL): 1" = 100'	VERT. SCALE (FULL): N/A
HORIZ. SCALE (HALF): 1" = 200'	VERT. SCALE (HALF): N/A

CLIENT: COLLIER COUNTY
 STORMWATER MANAGEMENT SECTION

TITLE: EXISTING CONDITIONS SHEET 7

PROJECT: PINE RIDGE SUBDIVISION
 STORMWATER FEASIBILITY STUDY

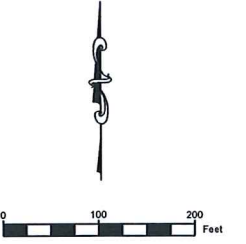
PROJECT NO.: 130063.00.28 FILE NAME: 130063.00.28 SHEET NUMBER: 7 of 13

No 62725
 *
 STATE OF
 FLORIDA
 REGISTERED PROFESSIONAL ENGINEER
 MARK J. SUNYAK, P.E.
 FLORIDA LICENSE NO. 62725
 2/21/18



LEGEND

- OPEN PIPE CULVERT
- ⊗ OPEN PIPE CULVERT OBSTRUCTED
- ◡ MITERED END CULVERT
- ◡⊗ MITERED END CULVERT OBSTRUCTED
- GRATE INLET
- ⊗□ GRATE INLET OBSTRUCTED
- - - ROADSIDE SWALE
- F - ROADSIDE SWALE FILLED
- ||||| INVERTED DRIVEWAY
- EXISTING DRAINAGE PIPE



REV #	REVISION	DRAWN	CHECKED	DATE

RWA ENGINEERING

6610 Willow Park Drive, Suite 200
 Naples, Florida 34109
 (239) 597-0575 FAX: (239) 597-0578
 www.consult-nwa.com
 Florida Certificates of Authorization
 EB 7663 LB 6952

DATE: APRIL 2017	DESIGNED: MIS
SEC. TWP. RGE: 10/34 48/49 25	DRAWN: OL
HORIZ. SCALE (PLANS): 1" = 100'	VERT. SCALE (PLANS): N/A
HORIZ. SCALE (PROFILES): 1" = 200'	VERT. SCALE (PROFILES): N/A

CLIENT: COLLIER COUNTY
 STORMWATER MANAGEMENT SECTION

TITLE: EXISTING CONDITIONS SHEET 8

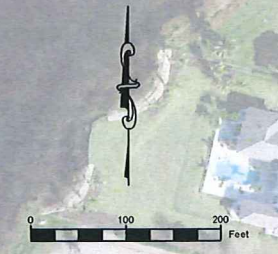
PROJECT: PINE RIDGE SUBDIVISION
 STORMWATER FEASIBILITY STUDY

PROJECT NO.: 130063.00.28 FILE NAME: 130063.00.28 SHEET NUMBER: 8 OF 13

No 62725
 *
 STATE OF
 FLORIDA
 PROFESSIONAL ENGINEER
 MARK I. SUNYAK, P.E.
 FLORIDA LICENSE NO. 62725

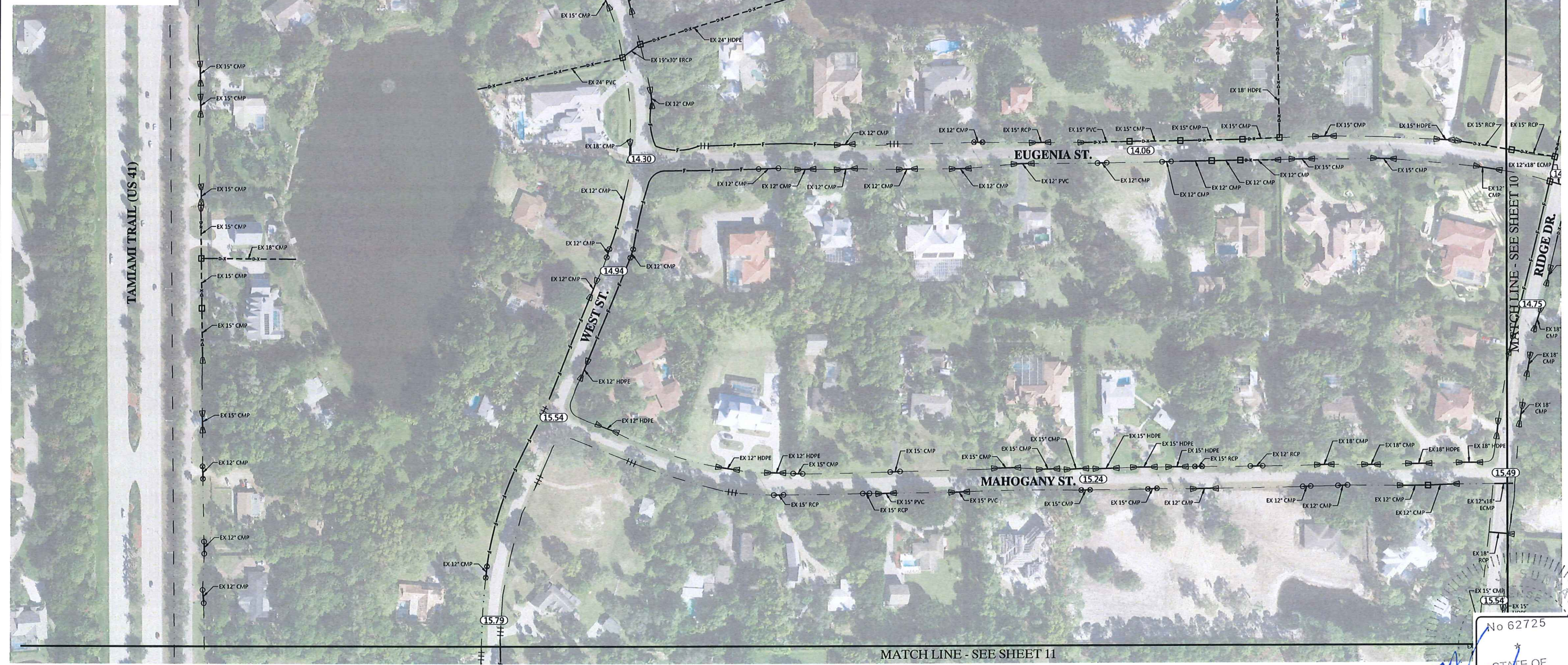
2/21/18

MATCH LINE - SEE SHEET 7



LEGEND

- OPEN PIPE CULVERT
- OPEN PIPE CULVERT OBSTRUCTED
- MITERED END CULVERT
- MITERED END CULVERT OBSTRUCTED
- GRATE INLET
- GRATE INLET OBSTRUCTED
- ROADSIDE SWALE
- ROADSIDE SWALE FILLED
- INVERTED DRIVEWAY
- EXISTING DRAINAGE PIPE



MATCH LINE - SEE SHEET 11

February 21, 2018 4:50 PM K:\01\13\00063\0028\13-01614 Pine Ridge Subdivision Feasibility Study\02 Public Stormwater System Documentation\Current Plans\13-01614\130063\0028\EXISTING DETAILED EXHIBIT_EXISTING.dwg

REV #	REVISION	DRAWN	CHECKED	DATE

RWA ENGINEERING

6610 Willow Park Drive, Suite 200
 Naples, Florida 34109
 (239) 597-0575 FAX: (239) 597-0578
 www.consult-rwa.com
 Florida Certificates of Authorization
 EB 7663 LB 6952

DATE: APRIL 2017	DESIGNED: MIS
SEC. TWP. RGE: 110.04 48.49 25	DRAWN: OL
HORIZ. SCALE (PLAT): 1" = 100'	VERT. SCALE (PLAT): N/A
HORIZ. SCALE (HAUF): 1" = 200'	VERT. SCALE (HAUF): N/A

CLIENT: COLLIER COUNTY STORMWATER MANAGEMENT SECTION

TITLE: EXISTING CONDITIONS SHEET 9

PROJECT: PINE RIDGE SUBDIVISION STORMWATER FEASIBILITY STUDY

PROJECT NO: 130063.00.28 FILE NAME: 130063.00.28 SHEET NUMBER: 9 of 13

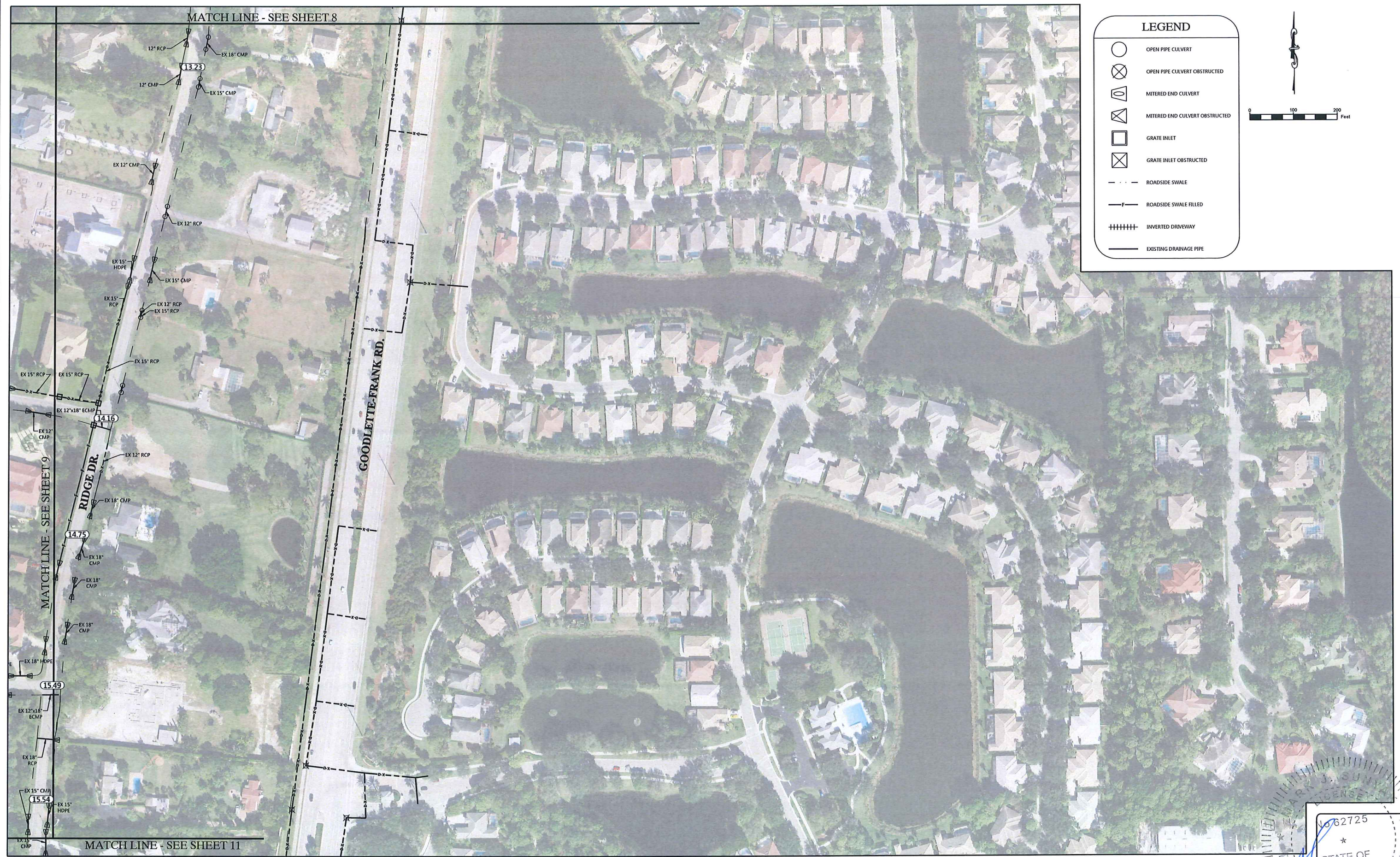
No 62725

STATE OF FLORIDA

PROFESSIONAL ENGINEER

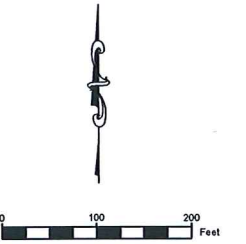
MARK J. SUNYAK, P.E.
 FLORIDA LICENSE NO. 162725

2/21/18



LEGEND

- OPEN PIPE CULVERT
- OPEN PIPE CULVERT OBSTRUCTED
- MITERED END CULVERT
- MITERED END CULVERT OBSTRUCTED
- GRATE INLET
- GRATE INLET OBSTRUCTED
- ROADSIDE SWALE
- ROADSIDE SWALE FILLED
- INVERTED DRIVEWAY
- EXISTING DRAINAGE PIPE



February 21, 2018 4:50 PM K:\2017\130063\00.28\13-4154 Pine Ridge Subdivision Feasibility Study\1011 Public Stormwater System Documentation\Current Plans\1011\130063\00.28\EXISTING.DWG

REV #	REVISION	DRAWN	CHECKED	DATE

RWA ENGINEERING

6610 Willow Park Drive, Suite 200
 Naples, Florida 34109
 (239) 597-0575 FAX: (239) 597-0578
 www.consult-rwa.com
 Florida Certificates of Authorization
 EB 7663 LB 6952

DATE: APRIL 2017	DESIGNED: MJS
SIC: TWP: RZE: 11034 48.49 25	DRAWN: OL
HORIZ. SCALE (PLA): 1" = 100'	VERT. SCALE (PLA): N/A
HORIZ. SCALE (HALF): 1" = 200'	VERT. SCALE (HALF): N/A

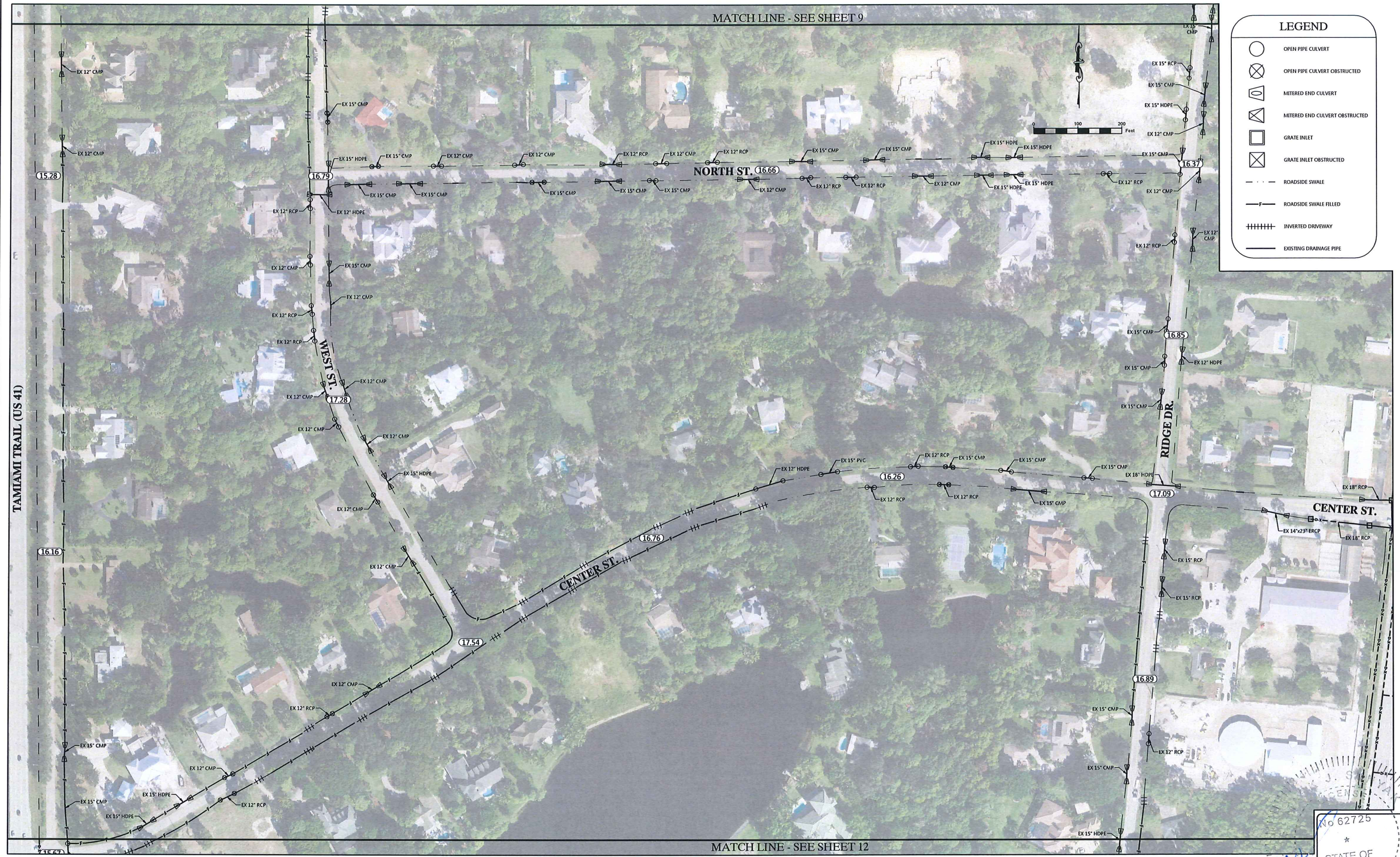
CLIENT: COLLIER COUNTY STORMWATER MANAGEMENT SECTION

TITLE: EXISTING CONDITIONS SHEET 10

PROJECT: PINE RIDGE SUBDIVISION STORMWATER FEASIBILITY STUDY

PROJECT NO: 130063.00.28 FILE NAME: 130063.00.28 SHEET NUMBER: 10 OF 13

Professional Engineer Seal for Mark J. Sunyak, P.E., State of Florida, License No. 62725. Includes handwritten file number 424118.



LEGEND

- OPEN PIPE CULVERT
- OPEN PIPE CULVERT OBSTRUCTED
- MITERED END CULVERT
- MITERED END CULVERT OBSTRUCTED
- GRATE INLET
- GRATE INLET OBSTRUCTED
- ROADSIDE SWALE
- ROADSIDE SWALE FILLED
- INVERTED DRIVEWAY
- EXISTING DRAINAGE PIPE



February 21, 2018 4:50 PM K:\2017\130063\00.28\13-4164 Pine Ridge Subdivision Feasibility Study\2011 Public Stormwater System Documentation\Current Plans\Exhibits\130063\0028 EX DETAILED EXHIBIT_EXISTING.dwg

REV #	REVISION	DRAWN	CHECKED	DATE

RWA ENGINEERING

6610 Willow Park Drive, Suite 200
 Naples, Florida 34109
 (239) 597-0575 FAX: (239) 597-0578
 www.consult-rwa.com
 Florida Certificates of Authorization
 EB 7663 LB 6952

DATE: APRIL 2017	DESIGNED: MJS
SIC: TWP: RGE: 13034 48.49 25	DRAWN: OL
HORIZ. SCALE (FULL): 1" = 100'	VERT. SCALE (FULL): N/A
HORIZ. SCALE (HALF): 1" = 200'	VERT. SCALE (HALF): N/A

CLIENT: COLLIER COUNTY STORMWATER MANAGEMENT SECTION

TITLE: EXISTING CONDITIONS SHEET 11

PROJECT: PINE RIDGE SUBDIVISION STORMWATER FEASIBILITY STUDY

PROJECT NO.: 130063.00.28 FILE NAME: 130063.00.28 SHEET NUMBER: 11 OF 13

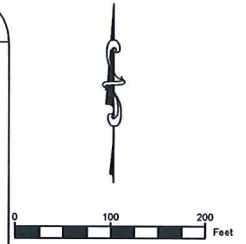
Professional Engineer Seal: No 62725, STATE OF FLORIDA, MARK J. SURYAK, P.E., FLORIDA LICENSE NO: 62725

Handwritten: 2/21/18

MATCH LINE - SEE SHEET 11

LEGEND

- OPEN PIPE CULVERT
- OPEN PIPE CULVERT OBSTRUCTED
- MITERED END CULVERT
- MITERED END CULVERT OBSTRUCTED
- GRATE INLET
- GRATE INLET OBSTRUCTED
- ROADSIDE SWALE
- ROADSIDE SWALE FILLED
- INVERTED DRIVEWAY
- EXISTING DRAINAGE PIPE



MATCH LINE - SEE SHEET 13

February 21, 2018 4:50 PM K:\2017\130063\0028 13-4154 Pine Ridge Subdivision Feasibility Study\011 Public Stormwater System Documentation\Current Plans\Exhibits\1300630028 EX DETAILED EXISTING.dwg

REV #	REVISION	DRAWN	CHECKED	DATE

RWA ENGINEERING
 6610 Willow Park Drive, Suite 200
 Naples, Florida 34109
 (239) 597-0575 FAX: (239) 597-0578
 www.consult-rwa.com
 Florida Certificates of Authorization
 EB 7663 LB 6952

DATE: APRIL, 2017	DESIGNED: MJS
SEC. TWP. RGE: 31.034 48.49 25	DRAWN: OL
HORIZ. SCALE (FULL): 1" = 100'	VERT. SCALE (FULL): N/A
HORIZ. SCALE (HALF): 1" = 200'	VERT. SCALE (HALF): N/A

CLIENT:	COLLIER COUNTY STORMWATER MANAGEMENT SECTION
TITLE:	EXISTING CONDITIONS SHEET 12

PROJECT:	PINE RIDGE SUBDIVISION STORMWATER FEASIBILITY STUDY	
PROJECT NO.:	FILE NAME:	SHEET NUMBER:
130063.00.28	130063.00.28	12 OF 13

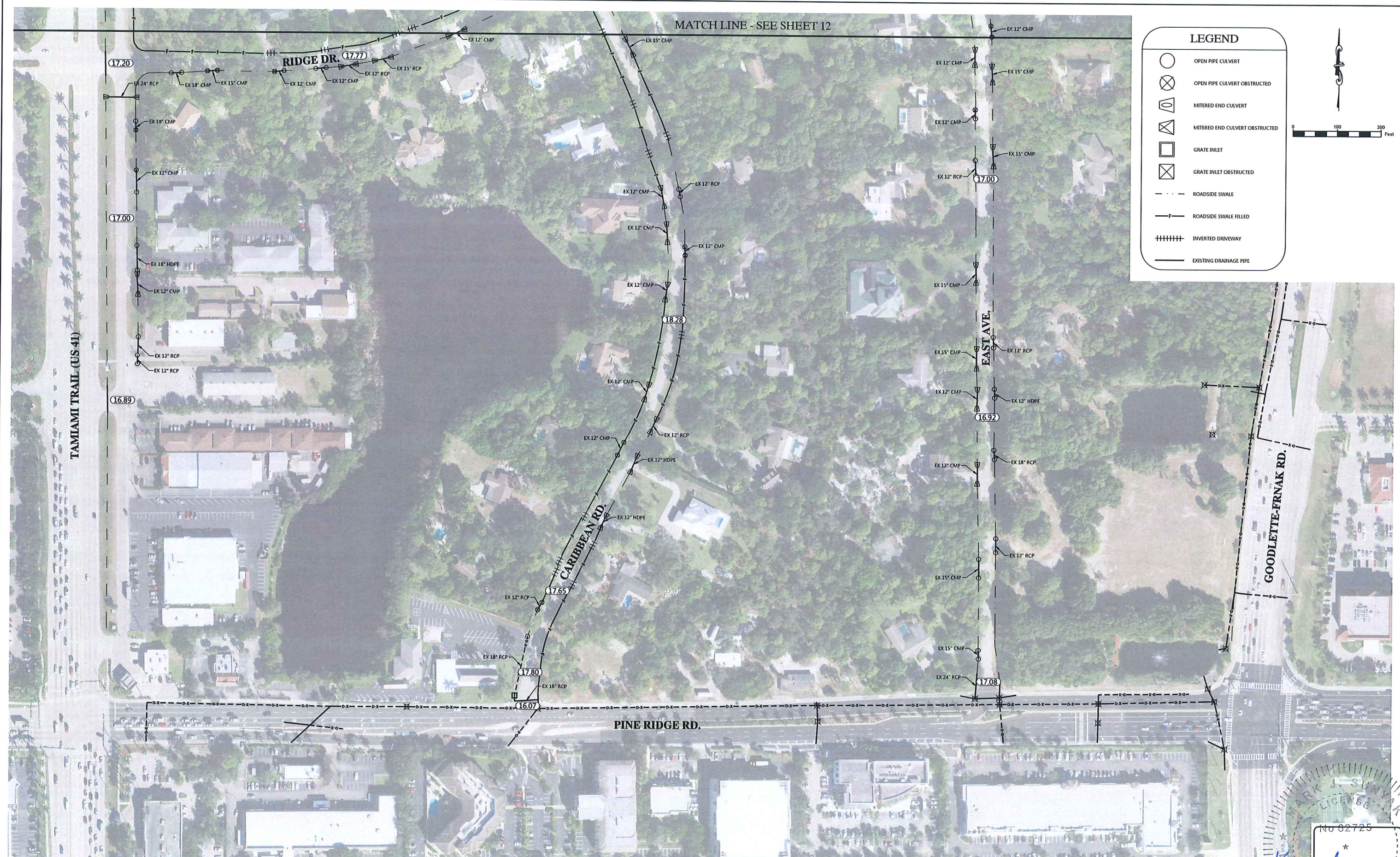
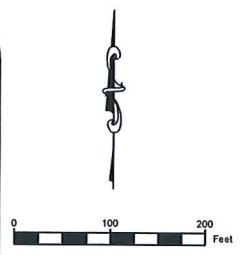
Professional Engineer Seal for Mark J. Sunyak, P.E., License No. 62725, State of Florida.

2/2/18

MATCH LINE - SEE SHEET 12

LEGEND

- OPEN PIPE CULVERT
- OPEN PIPE CULVERT OBSTRUCTED
- MITERED END CULVERT
- MITERED END CULVERT OBSTRUCTED
- GRATE INLET
- GRATE INLET OBSTRUCTED
- ROADSIDE SWALE
- ROADSIDE SWALE FILLED
- INVERTED DRIVEWAY
- EXISTING DRAINAGE PIPE



February 21, 2018 4:50 PM K:\0113\0063\0028\13-4164 Pine Ridge Subdivision Feasibility Study\011 Public Stormwater System Documentation\Current Plans\1300630028\EXISTING.dwg

REV #	REVISION	DRAWN	CHECKED	DATE

RWA ENGINEERING
 6610 Willow Park Drive, Suite 200
 Naples, Florida 34109
 (239) 597-0575 FAX: (239) 597-0578
 www.consult-rwa.com
 Florida Certificates of Authorization
 EB 7663 LB 6952

DATE: APRIL, 2017	DESIGNED: MUS
SEC: TWP: PAGE: 11034 48.49 25	DRAWN: OL
HORIZ. SCALE (PLA): 1" = 100'	VERT. SCALE (PLA): N/A
HORIZ. SCALE (HALF): 1" = 200'	VERT. SCALE (HALF): N/A

CLIENT: COLLIER COUNTY
 STORMWATER MANAGEMENT SECTION
 TITLE: EXISTING CONDITIONS SHEET 13

PROJECT: PINE RIDGE SUBDIVISION
 STORMWATER FEASIBILITY STUDY
 PROJECT NO: 130063.00.28 FILE NAME: 130063.00.28 SHEET NUMBER: 13 OF 13

STATE OF FLORIDA
 PROFESSIONAL ENGINEER
 MARK J. SUNYAK, P.E.
 FLORIDA LICENSE NO. 62725

2/21/18